

6

5

4

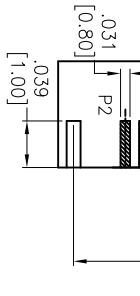
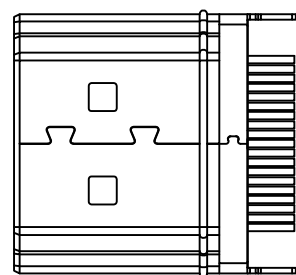
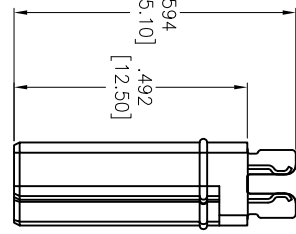
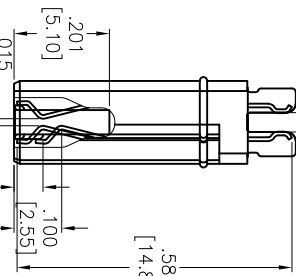
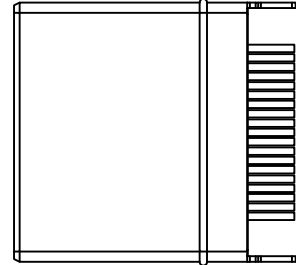
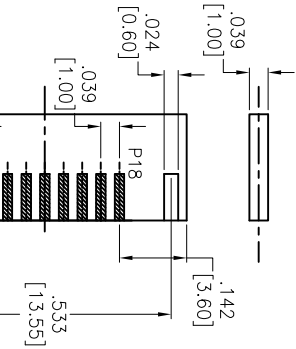
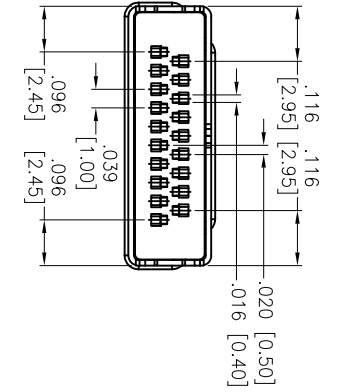
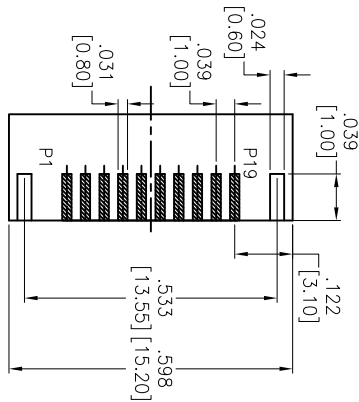
3

2

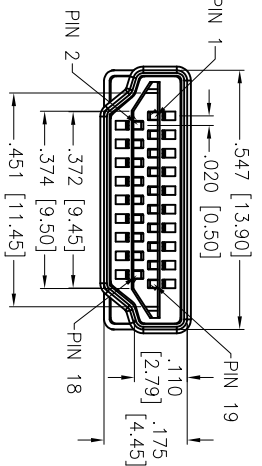
1

APPROVED: _____
 DATE: _____ TITLE: _____

Rev	AWO #	Description	Date	Appr
-		RELEASED	4/23/15	
A		UPDATE DIM.	4/28/15	AV/SY



RECOMMENDED PCB LAYOUT



SPECIFICATIONS:

Material: Insulator: Hi-Temp Thermoplastic, rated UL94V-0
 Insulator color: Black
 Contact: Brass
 Shell: SPC, Gold plated
 Plating:
 Gold flash over Nickel underplate overall
 Electrical:
 Operating voltage: 40 VAC max.
 Current rating: 0.5 Amps max
 Contact resistance: 10 mohms max
 Insulation resistance: 100 Mohms min
 Dielectric withstanding voltage: 500 VAC for 1 minute
 Temperature Rating:
 Operating temperature: -25°C to +85°C
 Environmental:
 Lead free, RoHS Compliant

ADAM TECH

909 Rahway Avenue, Union, NJ 07083
 Phone: 908-687-5000 Fax: 908-687-5710

TITLE: HDMI MALE CONNECTOR, A TYPE MALE,
 STRADDLE MOUNT FOR .039 [1.00] PCB THICKNESS

UNLESS OTHERWISE SPECIFIED ALL DIMENSIONS ARE INCHES [MM]		TOLERANCES EXCEPT AS NOTED INCHES		HOLE SIZES		DATE	
.X	± .10	ØX	± .10		± .10		
.XX	± .020	ØXXX	± .015		± .015		
.XXX	± .015	ØXXXX	± .010		± .010		
APPROVALS		DATE		DATE		DATE	
DRAWN	HR	4/23/15					
CHECKED	SY	4/23/15					
APPROVED							

REF: S0025T	SCALE: NTS	SHEET 1 OF 1
SIZE: X	PART NO: HDMI-PLUG-0M7	REV: A

6

5

4

3

2

1