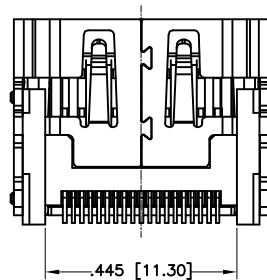
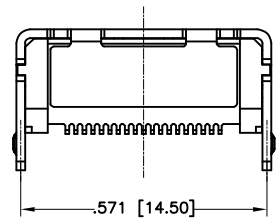
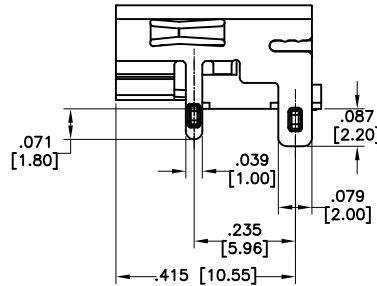
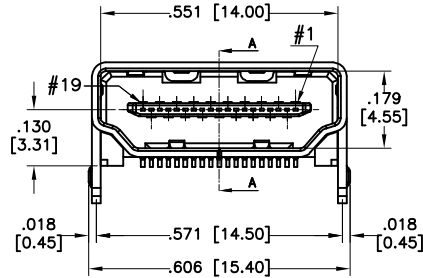
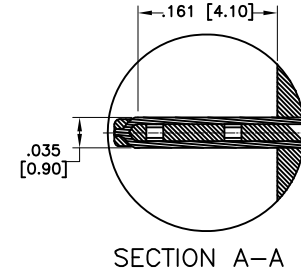
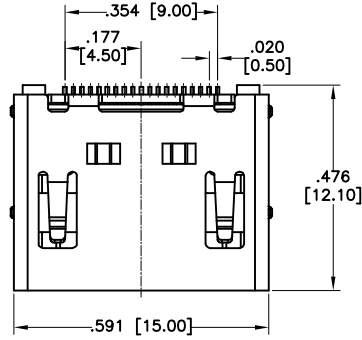
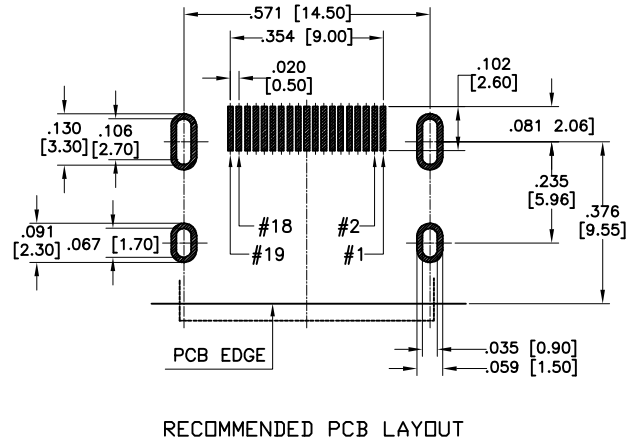


APPROVED: _____
 DATE: _____ TITLE: _____

Rev	AWO #	Description	Date	Appr
-		RELEASED	11/10/11	
A		REDRAWN	9/1/16	AY/AT



SPECIFICATIONS:

Material:
 Insulator: Hi-Temp Thermoplastic, rated UL 94V-0
 Insulator color: Black
 Shield: Copper Alloy, Nickel Plated
 Contacts: Copper Alloy
 Plating:
 15u" Gold over Nickel underplate on contact area,
 Tin over Copper underplate on tails

Electrical:
 Current rating: 0.5 A per pin.
 Voltage rating: 40 VAC
 Contact resistance: 60 mohms max.
 Insulation resistance: 100 Mohms min.
 Dielectric withstanding voltage: 500 VAC for 1 minute
 Temperature Rating:
 Operating temperature: -40°C to +85°C
 Environmental:
 Lead free, RoHS compliant.



UNLESS OTHERWISE SPECIFIED ALL DIMENSIONS ARE INCHES [MM] TOLERANCES: EXCEPT AS NOTED			
INCHES		HOLES	
.X	± .10	Ø.X	± .10
.XX	± .020	Ø.XX	± .015
.XXX	± .015	Ø.XXX	± .010
APPROVALS		DATE	
DRAWN	AY	11/10/11	
CHECKED	CC	11/10/11	
APPROVED			

ADAM TECH

909 Rahway Avenue, Union, NJ 07083
 Phone: 908-687-5000 Fax: 908-687-5710

TITLE HDMI CONNECTOR, 19 POS, RIGHT ANGLE SURFACE MOUNT, 15u" SEL GOLD PLATED			
SIZE X	PART NO. HDMI-S-RA-SMT-15	REV. A	
REF: S00009T	SCALE: NTS	SHEET 1 OF 1	