

6

5

4

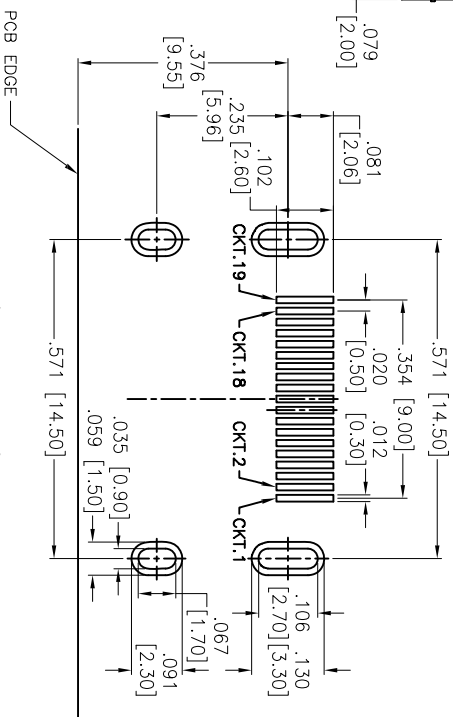
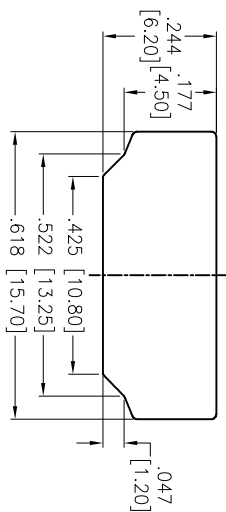
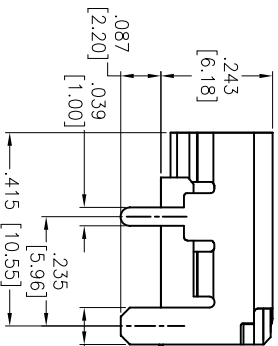
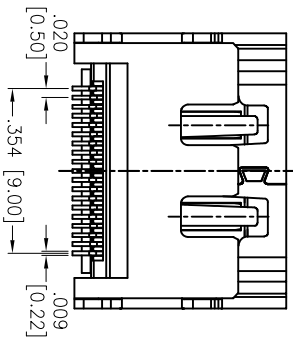
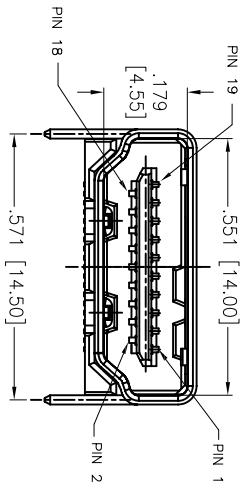
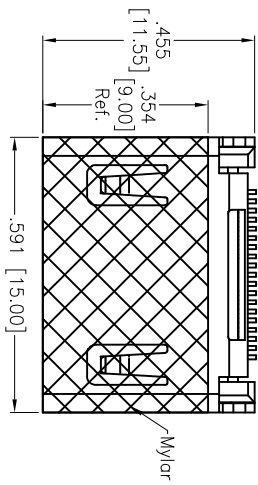
3

2

1

APPROVED: _____
 DATE: _____ TITLE: _____

Rev	AWO #	Description	Date	Appr
-		RELEASED	6/09/10	
A		REVISED DIM.	7/4/11	
B		REDRAWN	7/31/14	AY



SPECIFICATIONS:

Material:
 Housing: Hi-temp thermoplastic, UL 94V-0
 Housing color: Black
 Contact: Copper Alloy
 Shield: Copper Alloy, Matt Tin plated
 Plating:
 15u" Gold over Nickel underplate on contact area,
 Tin over Copper underplate on tails.
Electrical:
 Voltage rating: 40V
 Current rating: 0.5A
 Contact resistance: 10 mohms max.
 Insulation resistance: 100 Megohm min.
 Dielectric strength: 500VAC for 1 minute min.
 Temperature Rating:
 Operating temperature: -20°C to +85°C
Environmental:
 Lead free, RoHS Compliant

PACKAGED ON TAPE & REEL

ADAM TECH

909 Rahway Avenue, Union, NJ 07083
 Phone: 908-687-5000 Fax: 908-687-5710

TITLE: **HDMI CONNECTOR, RIGHT ANGLE**
 SMT TYPE, HEADER ASSEMBLY

UNLESS OTHERWISE SPECIFIED ALL DIMENSIONS ARE INCHES [MM]	
TOLERANCES: EXCEPT AS NOTED	
INCHES	HOLDS
.X ± .10	± .10
.XX ± .020	± .015
.XXX ± .015	± .010
APPROVALS	DATE
DRAWN	DY
CHECKED	
APPROVED	

SIZE	PART NO.	REV.
X	HDMI-S-RA-SMT-A-15-T/R	B
REF:	S00015C	SCALE: NTS
SHEET 1 OF 1		

A

B

C

D

A

B

C

D

6

5

4

3

2

1

