

Rev	AWO #	Description	Date	Appr
-		RELEASED	5/4/15	

6

5

4

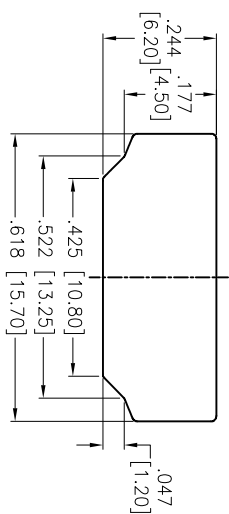
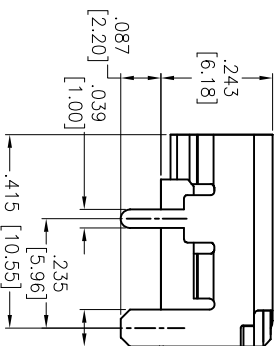
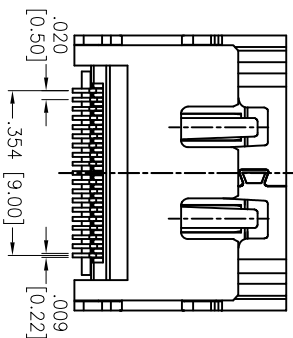
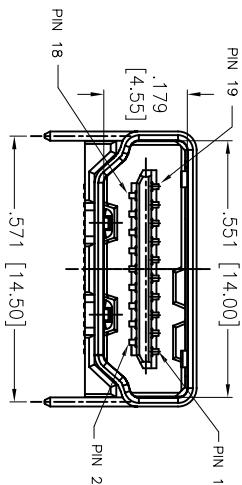
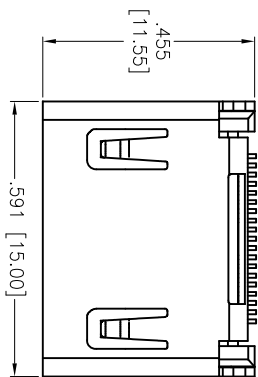
3

2

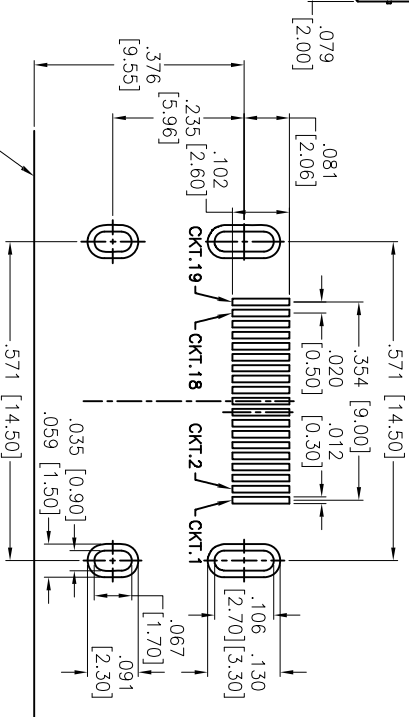
1

APPROVED: _____

DATE: _____ TITLE: _____



RECOMMENDED PANEL CUT



RECOMMENDED PCB LAYOUT

PACKAGED ON TAPE & REEL

SPECIFICATIONS:

Material:

Housing: Hi-temp thermoplastic, UL 94V-0

Housing color: Black

Contact: Copper Alloy

Shield: Copper Alloy, Matt Tin plated

Plating:

30u" Gold over Nickel underplate on contact area,

Tin over Copper underplate on tails.

Electrical:

Voltage rating: 40V

Current rating: 0.5A

Contact resistance: 10 mohms max.

Insulation resistance: 100 Megohm min.

Dielectric strength: 500VAC for 1 minute min.

Temperature Rating:

Operating temperature: -20°C to +85°C

Environmental:

Lead free, RoHS Compliant

ADAM TECH909 Rahway Avenue, Union, NJ 07083
Phone: 908-687-5000 Fax: 908-687-5710TITLE: HDMI CONNECTOR, RIGHT ANGLE, SMT TYPE
HEADER ASSEMBLY, NO MYLAR

UNLESS OTHERWISE SPECIFIED ALL DIMENSIONS ARE INCHES [MM] TOLERANCES: EXCEPT AS NOTED		INCHES		HOLDS	
.X	± .10	ØX	± .10		
.XX	± .020	ØXX	± .015		
.XXX	± .015	ØXXX	± .010		
APPROVALS		DATE			
DRAWN	AY	5/4/15			
CHECKED	SL	5/4/15			
APPROVED					
SIZE	PART NO.	REF:	SCALE:	SHEET	REV.
X	HDMI-S-RA-SMT-A-30-NKT-T/R	S00015C	NIS	1 OF 1	-

A

B

C

D

A

B

C

D

6

5

4

3

2

1

