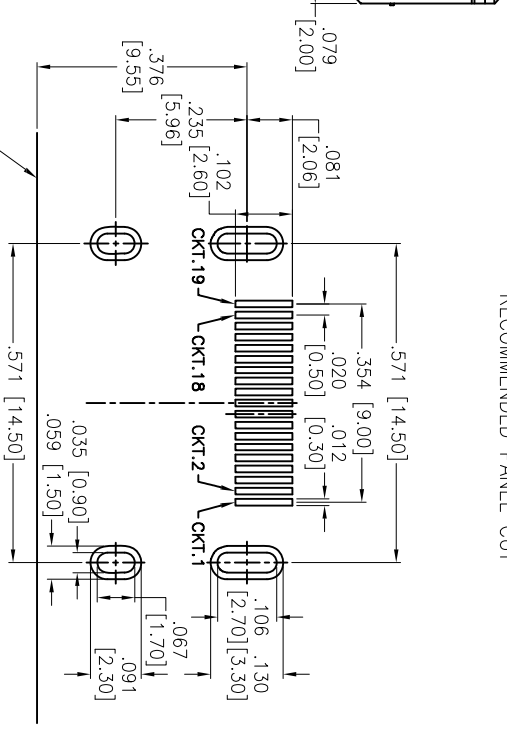
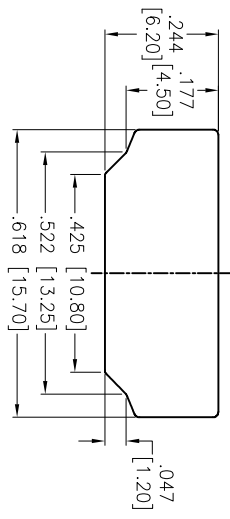
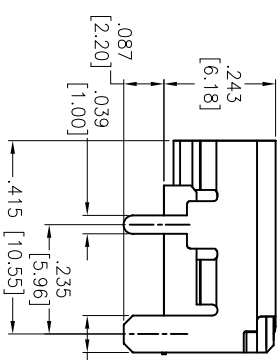
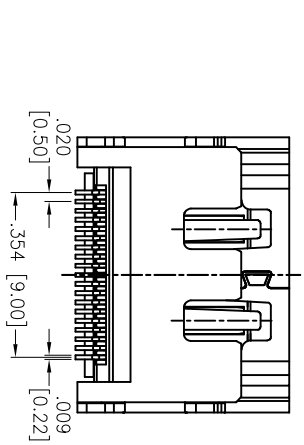
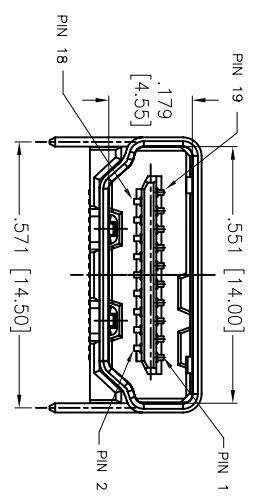
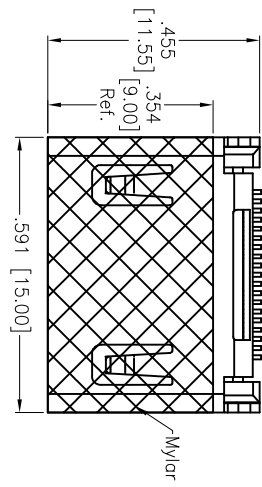


Rev	AWO #	Description	Date	Appr
-		RELEASED	10/8/14	

APPROVED: _____

DATE: _____ TITLE: _____



PCB EDGE
RECOMMENDED PCB LAYOUT

PACKAGED ON TAPE & REEL

SPECIFICATIONS:

- Material:** Housing: Hi-temp thermoplastic, UL 94V-0
- Housing color:** Black
- Contact:** Copper Alloy
- Shield:** Copper Alloy, Matt Tin plated
- Plating:** 30u" Gold over Nickel underplate on contact area, Tin over Copper underplate on tails.
- Electrical:** Voltage rating: 40V
- Current rating:** 0.5A
- Contact resistance:** 10 mohms max.
- Insulation resistance:** 100 Megohm min.
- Dielectric strength:** 500VAC for 1 minute min.
- Temperature Rating:** Operating temperature: -20°C to +85°C
- Environmental:** Lead free, RoHS Compliant

A

A

B

B

C

C

D

D

ADAM TECH
909 Rahway Avenue, Union, NJ 07083
Phone: 908-687-5000 Fax: 908-687-5710

TITLE: **HDMI CONNECTOR, RIGHT ANGLE SMT TYPE, HEADER ASSEMBLY**

UNLESS OTHERWISE SPECIFIED ALL DIMENSIONS ARE INCHES [MM] TOLERANCES: EXCEPT AS NOTED	
INCHES	[MM]
.X ± .10	ØX ± .10
.XX ± .020	ØXX ± .015
.XXX ± .015	ØXXX ± .010
APPROVALS	DATE
DRAWN	SS
CHECKED	
APPROVED	
DATE	10/8/14

SIZE	PART NO.	REV.
X	HDMI-S-RA-SMT-A-30-T/R	-
REF:	S00015C	
SCALE:	INTS	
SHEET	1 OF -	



6

5

4

3

2

1