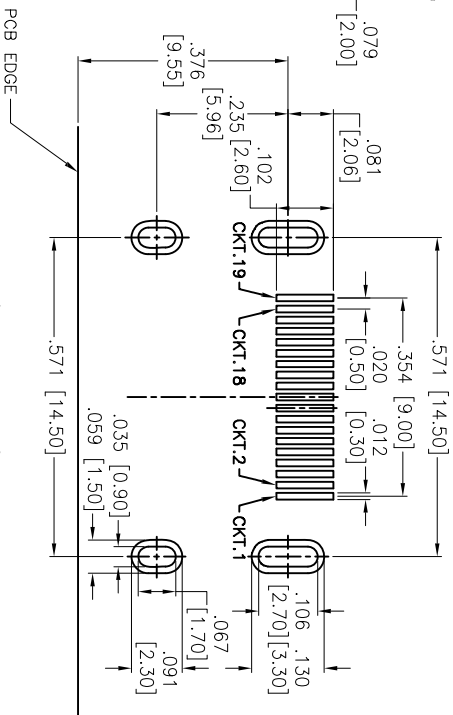
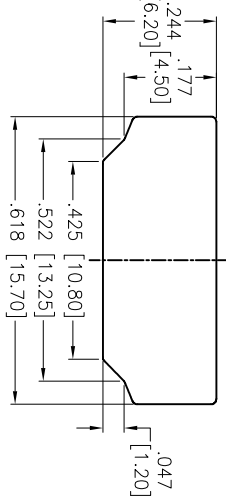
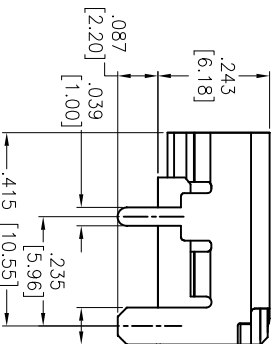
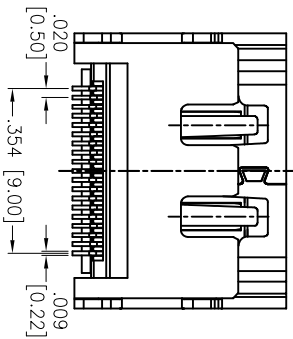
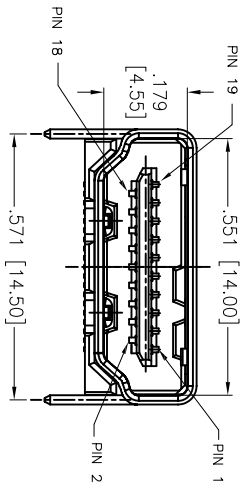
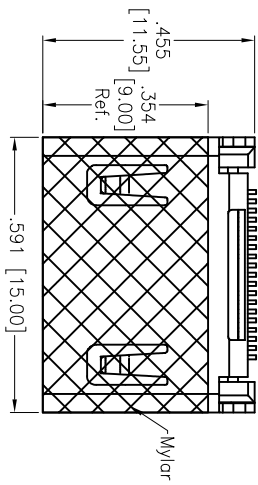


APPROVED: _____

DATE: _____ TITLE: _____

Rev	AWO #	Description	Date	Appr
-		RELEASED	10/01/09	
A		REVISED DIM.	7/4/11	
B		REDRAWN	7/31/14	AY



SPECIFICATIONS:

- Material:** Housing: Hi-temp thermoplastic, UL 94V-0
- Housing color:** Black
- Contact:** Copper Alloy
- Shield:** Copper Alloy, Matt Tin plated
- Plating:** Gold flash over Nickel underplate on contact area, Tin over Copper underplate on tails.
- Electrical:** Voltage rating: 40V
- Current rating:** 0.5A
- Contact resistance:** 10 mohms max.
- Insulation resistance:** 100 Megohm min.
- Dielectric strength:** 500VAC for 1 minute min.
- Temperature Rating:** Operating temperature: -20°C to +85°C
- Environmental:** Lead free, RoHS Compliant

ADAM TECH

909 Rahway Avenue, Union, NJ 07083
Phone: 908-687-5000 Fax: 908-687-5710

HDMI CONNECTOR, RIGHT ANGLE
SMT TYPE, HEADER ASSEMBLY

UNLESS OTHERWISE SPECIFIED ALL DIMENSIONS ARE INCHES [MM]	
TOLERANCES: EXCEPT AS NOTED	
INCHES	HOLES
.X ± .10	± .10
.XX ± .020	± .015
.XXX ± .015	± .010
APPROVALS	DATE
DRAWN	DY
CHECKED	
APPROVED	

SIZE	PART NO.	REV.
X	HDMI-S-RA-SMT-A	B
REF:	S00015C	SCALE: NTS
SHEET 1 OF 1		

