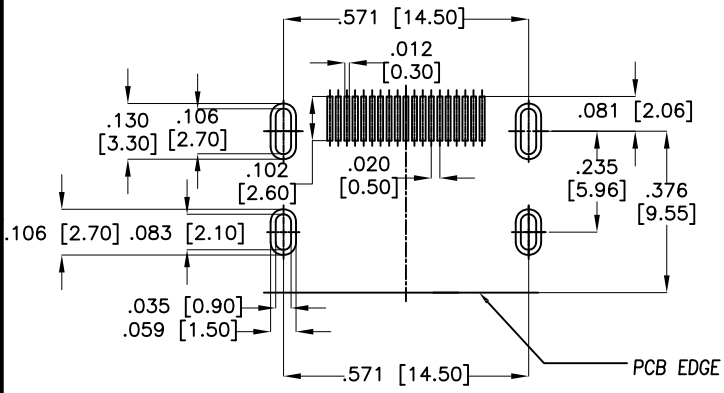
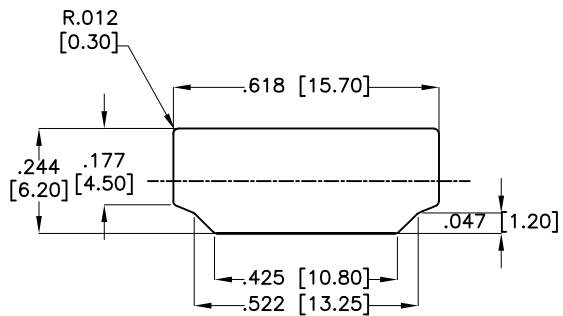


APPROVED: \_\_\_\_\_  
 DATE: \_\_\_\_\_ TITLE: \_\_\_\_\_

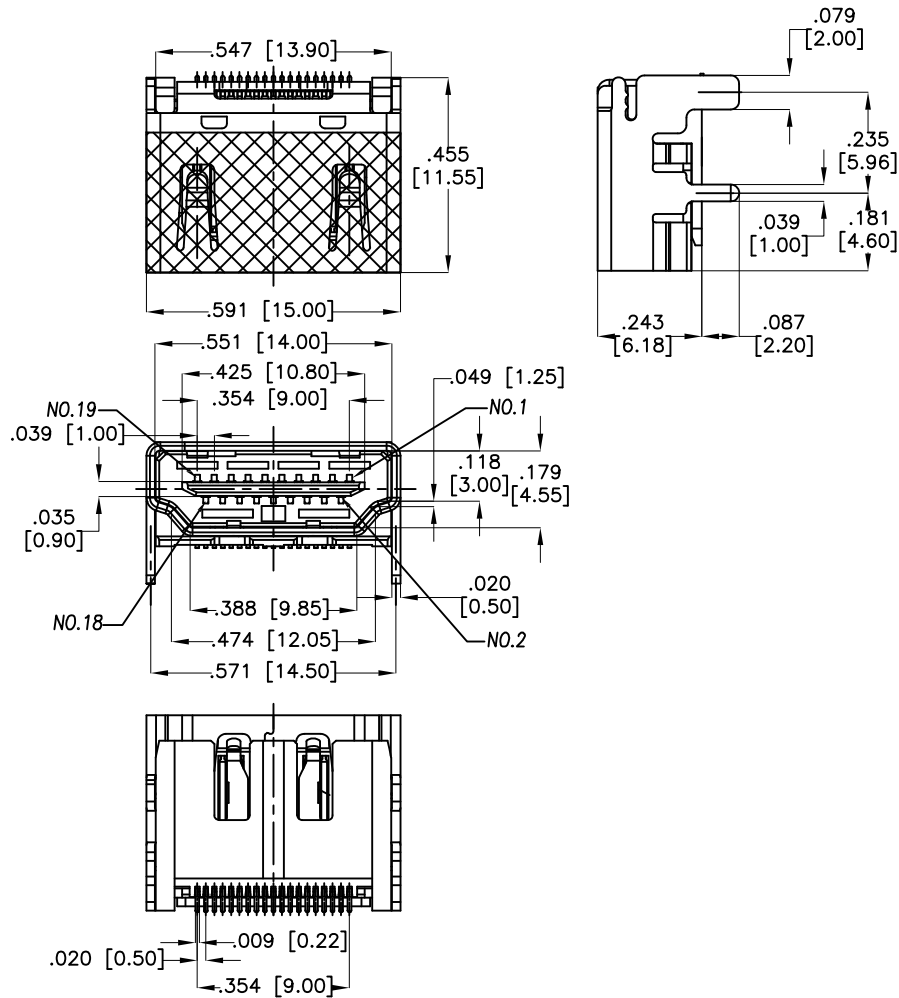
Rev	AWO #	Description	Date	Appr
-		RELEASED	01/21/13	



RECOMMENDED PCB LAYOUT (THICKNESS=1.6±0.15mm)



REFERENCE PANEL CUT OUT DIMENSION



SPECIFICATIONS:

Material:  
 Housing: Hi-temp thermoplastic, UL 94V-0  
 Housing color: Black  
 Contact: Brass  
 Shield: Brass, Nickel plated  
 Plating:  
 30u" Gold over Nickel underplate on contact area,  
 Tin over Copper underplate on tails.  
 Electrical:  
 Voltage rating: 40V  
 Current rating: 0.5A  
 Insulation resistance: 100 Megohm min.  
 Contact resistance: 30 mohms max.  
 Temperature Rating:  
 Operating temperature: -20°C to +85°C  
 Environmental:  
 Lead free, RoHS Compliant



PACKAGED ON TAPE & REEL

UNLESS OTHERWISE SPECIFIED ALL DIMENSIONS ARE INCHES [MM] TOLERANCES: EXCEPT AS NOTED			
INCHES		HOLES	
.X	± .10	Ø.X	± .10
.XX	± .020	Ø.XX	± .015
.XXX	± .015	Ø.XXX	± .010
APPROVALS		DATE	
DRAWN	TW	01/21/13	
CHECKED	AH	01/21/13	
APPROVED			

**ADAM TECH**

909 Rahway Avenue, Union, NJ 07083  
 Phone: 908-687-5000 Fax: 908-687-5710

TITLE HDMI CONNECTOR, RIGHT ANGLE SINGLE, SMT TYPE, NO RIB		
SIZE X	PART NO. HDMI-S-RA-SMT-NR-30-KT-T/R	REV. -
REF: S00075C	SCALE: NTS	SHEET 1 OF 1