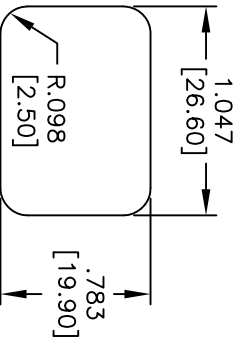
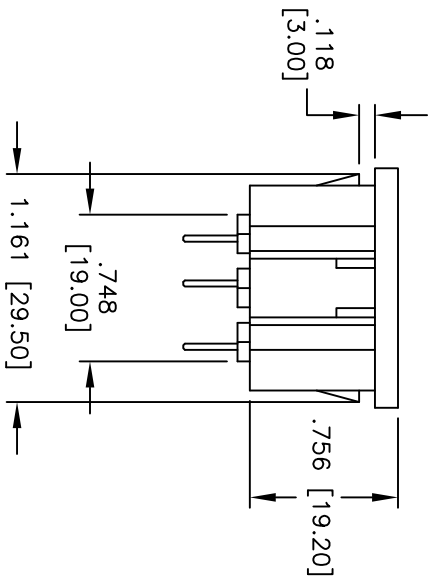
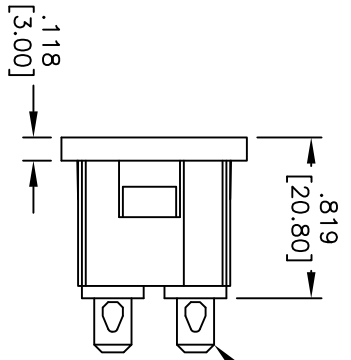
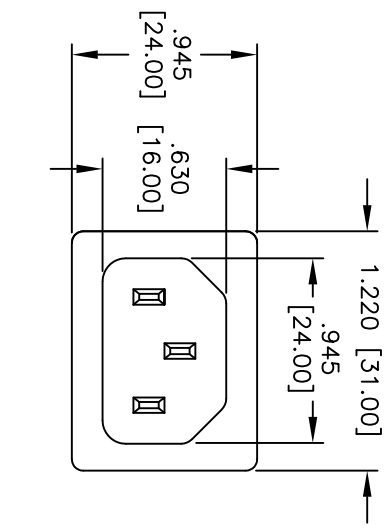


Rev	AWO #	Description	Date	Appr
-		RELEASED	4/22/10	

APPROVED: _____
 DATE: _____ TITLE: _____



RECOMMENDED
 PANEL CUTOUT

SPECIFICATIONS:

Material:

Insulator: Nylon 66, glass reinforced, rated UL 94V-0

Insulator color: Black

Contacts: Brass

Plating:

Tin over Copper underplate overall

Electrical:

Operating voltage: 250 VAC

Current rating: UL & CSA: 15 Amps max

VDE: 10 Amps max

Insulation resistance: 100 Mohms min @ 500 VDC

Dielectric withstanding voltage: 2,000 VAC for 1 minute

Temperature Rating:

Operating temperature: -25°C to +70°C

Environmental:

Lead free, RoHS compliant



UNLESS OTHERWISE SPECIFIED
 ALL DIMENSIONS ARE MM [INCHES]
 TOLERANCES: EXCEPT AS NOTED
 INCHES

.X	±.10	ØXX	±.10
.XX	±.020	ØXXX	±.015
.XXX	±.015	ØXXXX	±.010

APPROVALS

DATE	DATE
------	------

ADAM TECH

909 Rehway Avenue, Union, NJ 07083
 Phone: 908-687-5000 Fax: 908-687-5710

TITLE
 IEC MALE INLET, SNAP-IN PANEL MOUNT,
 3.0mm PANEL, .187 QUICK CONNECTS

DRAWN	DY	4/22/10
CHECKED		
APPROVED		

SIZE	PART NO.	SCALE	SHEET
X	IEC-C-1-300	NTS	1 OF 1
REV.			