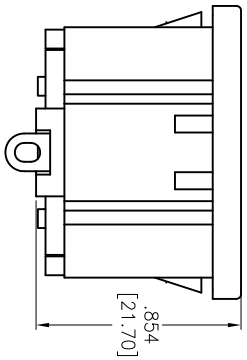
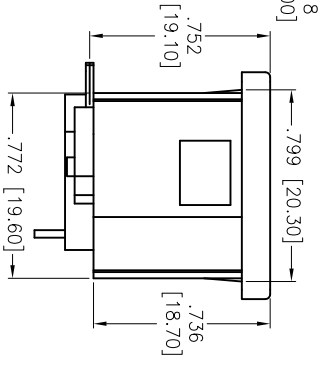
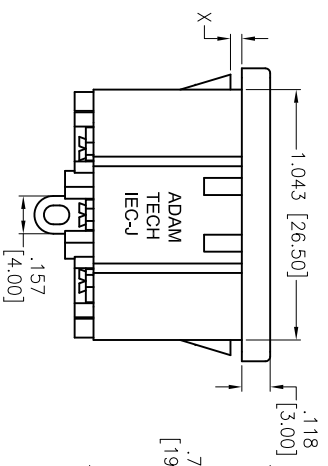
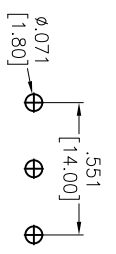
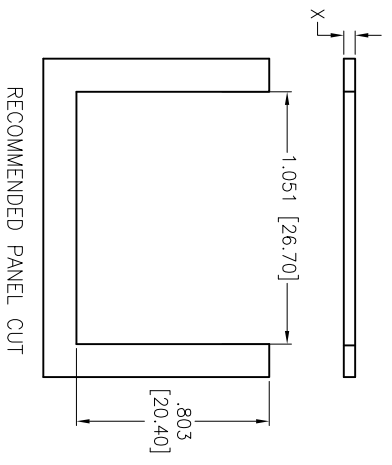
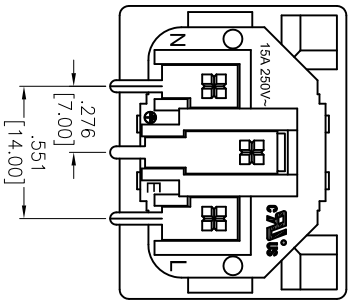
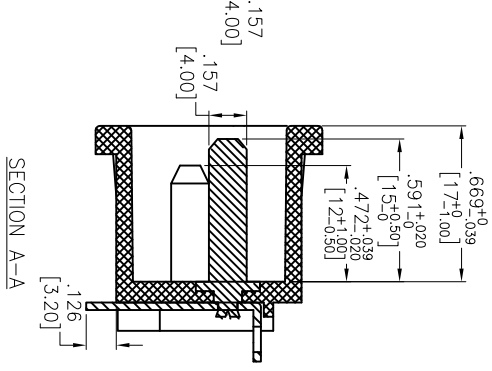
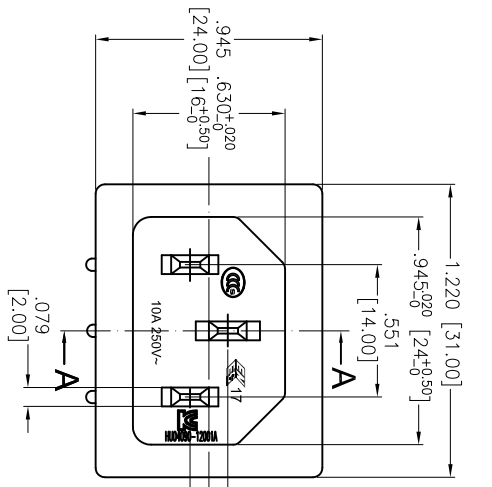


APPROVED: _____
 DATE: _____ TITLE: _____

Rev	AWO #	Description	Date	Appr
-		RELEASED	6/17/05	
A		REDRAWN	11/30/12	



PART NUMBER	DIMENSIONS
IEC-J-4-120	.047 [1.20]
IEC-J-4-150	.059 [1.50]
IEC-J-4-200	.079 [2.00]
IEC-J-4-300	.118 [3.00]

SPECIFICATIONS:
 Material: Insulator: Nylon 66, rated UL 94V-0
 Insulator color: Copper Alloy
 Contacts: Copper Alloy
 Plating: Nickel over Copper underplate overall
 PCB pins: Tin over Copper underplate
 Electrical: Operating voltage: 250 VAC
 Current rating: 15A 250V (C-ULus)

15A 250V (ENEC & CCC & KC)
 Insulation resistance: 100 Mohms min @ 500 VDC
 Dielectric withstanding voltage: 3,000 VAC for 1 minute
 Environmental: Lead free, RoHS compliant

ADAM TECH

909 Railway Avenue, Union, NJ 07083
 Phone: 908-687-5000 Fax: 908-687-5710

IEC MALE INLET, SNAP-IN PANEL MOUNT
 RIGHT ANGLE, PCB TAILS

UNLESS OTHERWISE SPECIFIED ALL DIMENSIONS ARE INCHES [MM]	
TOLERANCES: EXCEPT AS NOTED	
INCHES	
.X	±.10
.XX	±.020
.XXX	±.015
.XXX	±.010
APPROVALS	DATE
DRAWN	SS
CHECKED	
APPROVED	

REF:	S00087C	SCALE:	NTS	SHEET	1 OF 1
SIZE	PART NO.	REV.			
X	IEC-J-4-XXX	A			

