

6

5

4

3

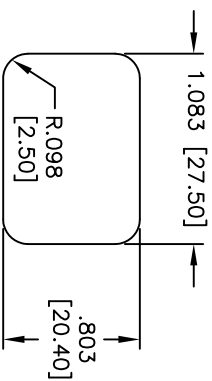
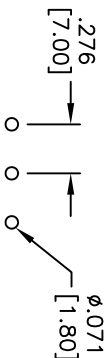
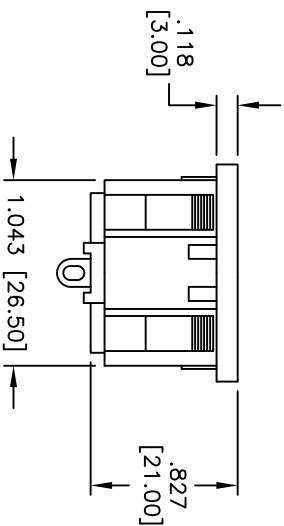
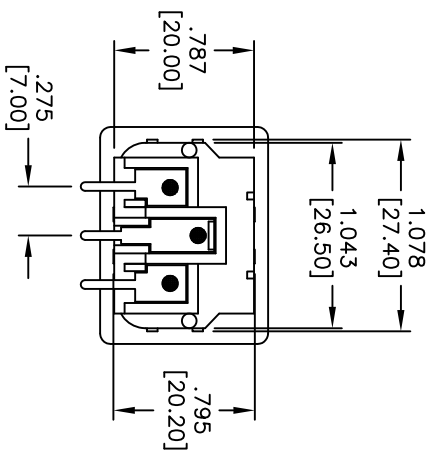
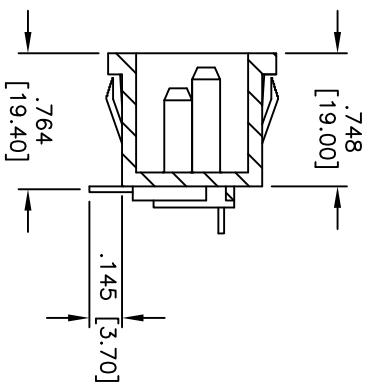
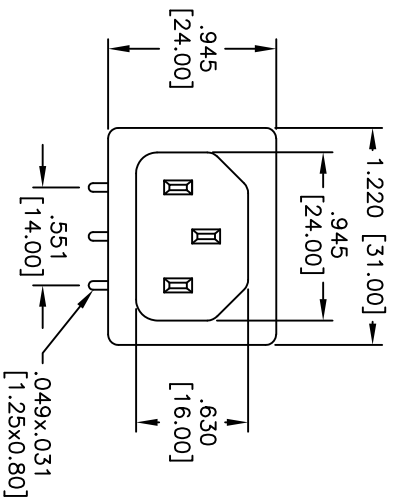
2

1

APPROVED: _____

DATE: _____ TITLE: _____

Rev	AWO #	Description	Date	Appr
-		RELEASED	6/17/05	
A		UPDATED	7/10/07	



RECOMMENDED PANEL CUT-OUT
THICKNESS: 0.8mm-3.0mm

SPECIFICATIONS:

Material:

Insulator: Nylon 66, glass reinforced, rated UL 94V-0

Insulator color: Black

Contacts: Brass

Plating:

Nickel over Copper underplate overall

PCB pins: Tin over Copper underplate

Electrical:

Operating voltage: 250 VAC

VDE: 10 Amps max

Current rating: UL & CSA: 15 Amps max

Insulation resistance: 100 Mohms min @ 500 VDC

Dielectric withstanding voltage: 2,000 VAC for 1 minute

Temperature Rating:

Operating temperature: -25°C to +70°C

Environmental:

Lead free, RoHS compliant

ADAM TECH

909 Railway Avenue, Union, NJ 07083

Phone: 908-687-5000 Fax: 908-687-5710

TITLE: IEC MALE INLET, SNAP-IN PANEL MOUNT
RIGHT ANGLE PCB TAILS

UNLESS OTHERWISE SPECIFIED ALL DIMENSIONS ARE INCHES [MM]	
TOLERANCES: EXCEPT AS NOTED	HOLES
.X ± .10	Ø.X ± .10
.XX ± .020	Ø.XXX ± .015
.XXX ± .015	Ø.XXXX ± .010
APPROVALS	DATE
DRAWN SS	6/17/05
CHECKED	
APPROVED	

SIZE	PART NO.	REV.
X	IEC-J-4	A
REF: S00371	SCALE: NTS	SHEET 1 OF 1



A

B

C

D

A

B

C

D

6

5

4

3

2

1