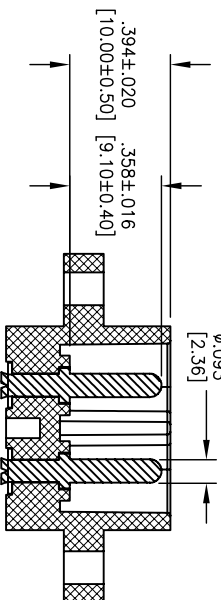
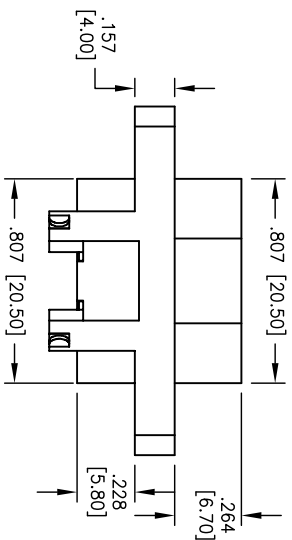
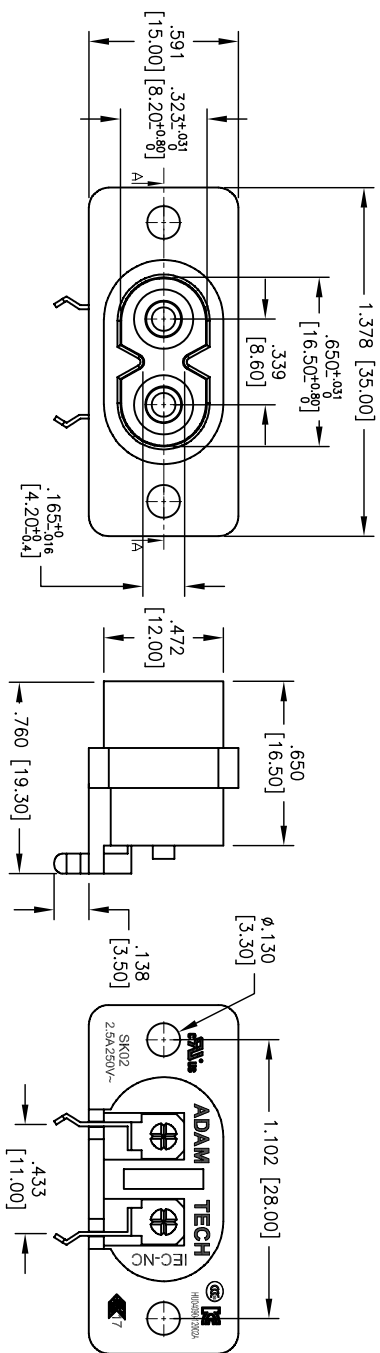
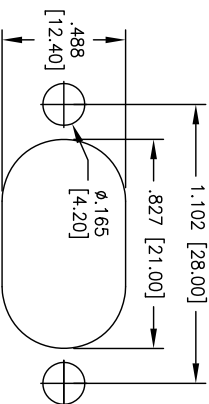


APPROVED: \_\_\_\_\_  
 DATE: \_\_\_\_\_ TITLE: \_\_\_\_\_

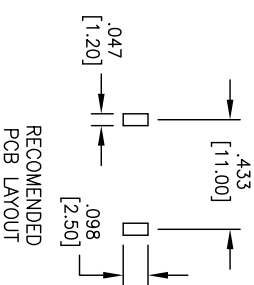
Rev	AWO #	Description	Date	Appr
-		RELEASED	XXXXXXXX	
A		LOGO REVISION	4/7/06	
B		REVISED SHAPE	8/22/11	
C		REDRAWN	1/18/13	



SECTION A-A



RECOMMENDED PANEL CUT-OUT



RECOMMENDED PCB LAYOUT

**SPECIFICATIONS:**

Material:  
 Insulator: PBT, rated UL 94V-0  
 Insulator color: Black  
 Contacts: Copper Alloy, Tin Plated  
 Center Pin: Copper Alloy, Nickel Plated  
 Electrical:  
 Operation voltage: 250 VAC max  
 Current rating: 2.5 Amps max  
 Insulation resistance: 100 Mohms min @ 500 VDC  
 Dielectric withstanding voltage: 3000 VAC for 1 minute  
 Environmental:  
 Lead free, RoHS compliant.



UNLESS OTHERWISE SPECIFIED ALL DIMENSIONS ARE MM [INCHES] TOLERANCES: EXCEPT AS NOTED	
INCHES	±.10
HOLES	±.10
ØX	±.015
ØXX	±.010
ØXXX	±.010
APPROVALS	DATE
SS	5/4/04

**ADAM TECH**  
 909 Rahway Avenue, Union, NJ 07083  
 Phone: 908-687-5000 Fax: 908-687-5710

TITLE: IEC 60320, C8, RIGHT ANGLE, PCB TERMINAL, PANEL MOUNT

SIZE: X PART NO.: IEC-NC-A-4

REV.	DATE	DESCRIPTION
C		

DRAWN	SS	5/4/04
CHECKED		
APPROVED		

REF:	S00087C	SCALE:	NTS	SHEET:	1 OF 1
------	---------	--------	-----	--------	--------

6

5

4

3

2

1