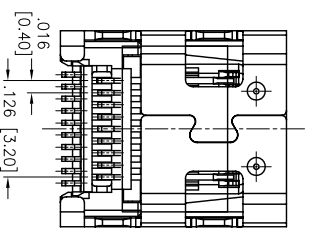
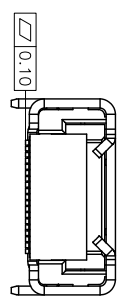
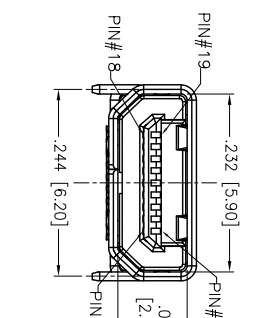
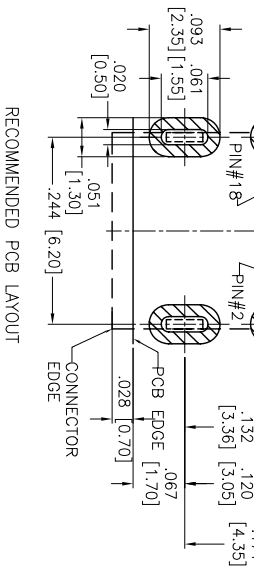
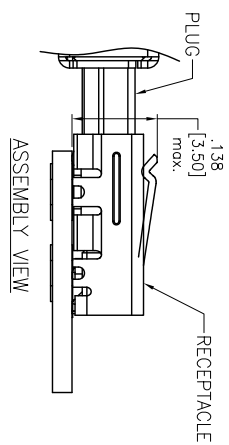
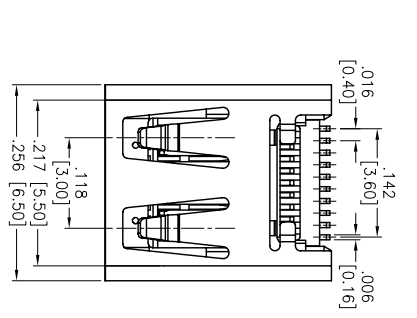
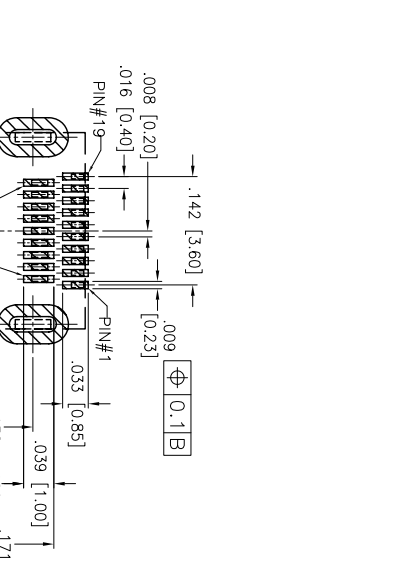


APPROVED: _____
 DATE: _____ TITLE: _____

Rev	AWO #	Description	Date	Appr
-		RELEASED	1/4/11	
A		UPDATE DRAWING	4/2/15	AV/NC



PIN SIGNAL ASSIGNMENT	PIN SIGNAL ASSIGNMENT
1 HOT PLUG DETECT	2 UTILITY
3 TMDS DATA2+	4 TMDS DATA2 SHIELD
5 TMDS DATA2-	6 TMDS DATA1+
7 TMDS DATA1 SHIELD	8 TMDS DATA1-
9 TMDS DATA0+	10 TMDS DATA0 SHIELD
11 TMDS DATA0-	12 TMDS CLOCK+
13 TMDS CLOCK SHIELD	14 TMDS CLOCK-
15 CFC	16 DDC/CFC GROUND
17 SOL	18 SDA
19 +5V Power	

CONNECTION	SIGNALS
FIRST MAKE	TYPE D CONNECTOR
SECOND MAKE	CONNECTOR SHELL
THIRD MAKE	PINS 1-18
	PIN19(+5V POWER)

6 SPECIFICATIONS:
5 Material: HI-temp thermoplastic, rated UL 94V-0
 Insulator color: Black
 Contacts: Phosphor Bronze
 Shell: Stainless Steel, Tin plated
 Plating: Gold flash over Nickel underplate overall
 Electrical: Operating voltage: 40 VAC max.
 Current rating: 0.3 Amp
 Contact resistance: 10 mohms max.
 Insulation resistance: 100 Mohms min.
 Dielectric withstanding voltage: 250 VAC for 1 minute (Unmated)
 150 VAC for 1 minute (Mated)

4 Mechanical:
 Insertion Force: 44.1N max
 Extraction Force 5~25N min
 Mating Cycles: 5,000 Cycles
 Temperature Rating: Operating temperature: -25°C to +85°C
 Environmental: Lead free, RoHS compliant.

ADAM TECH
 909 Rahway Avenue, Union, NJ 07083
 Phone: 908-687-5000 Fax: 908-687-5710

TITLE
 MICRO HDMI, SINGLE PORT, RIGHT ANGLE, SMT

UNLESS OTHERWISE SPECIFIED ALL DIMENSIONS ARE INCHES [MM] TOLERANCES EXCEPT AS NOTED			
.X	±.10	ØX	±.10
.XX	±.020	ØXX	±.015
.XXX	±.015	ØXXX	±.010
.XXX	±.015	ØXXX	±.010
APPROVALS		DATE	
DRAWN	AY	1/4/11	
CHECKED	AH	1/4/11	
APPROVED			

SIZE	PART NO.	REV.
X	MCHDMI-S-RA-2-SMT	A
REF:	S00015C	
SCALE:	NIS	
SHEET	1 OF 1	