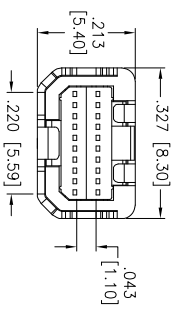
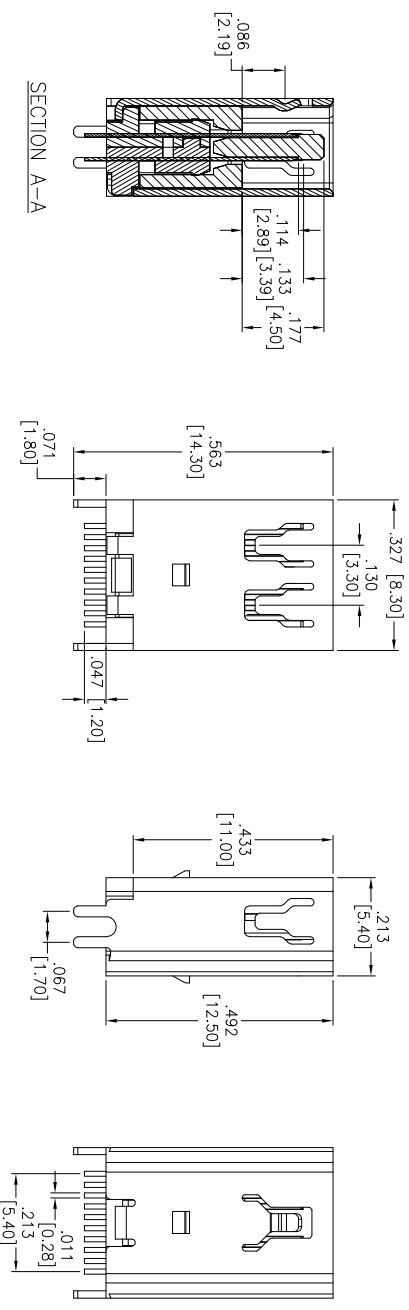
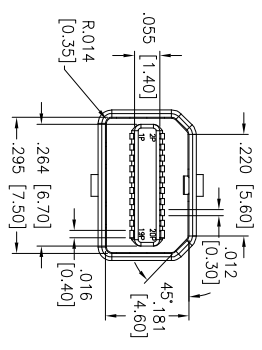


Rev	AWO #	Description	Date	Appr
-		RELEASED	3/10/15	

APPROVED: _____ TITLE: _____
 DATE: _____

Top Row			Bottom Row		
Pin Number	Signal Type	Pin Name	Pin Number	Signal Type	Pin Name
1	GND	GND	2	In	HotPlug Detect
3	Out	ML_Lane 0(p)	4	CONF1G	CONF1G1
5	Out	ML_Lane 0(n)	6	CONF1G	CONF1G2
7	GND	GND	8	GND	GND
9	Out	ML_Lane 1(p)	10	Out	ML_Lane 3(p)
11	Out	ML_Lane 1(n)	12	Out	ML_Lane 3(n)
13	GND	GND	14	GND	GND
15	Out	ML_Lane 2(p)	16	I/O	AUX_CH(p)
17	Out	ML_Lane 2(n)	18	I/O	AUX_CH(n)
19	GND	GND	20	PWR Out	DP_PWR



SPECIFICATIONS:
 Material: Hi-Temp Thermoplastic, rated UL 94V-0
 Insulator color: Black
 Contact: Copper Alloy
 Shell: Brass, nickel plated
 Plating: Gold over Nickel underplate on contact area, Tin over Copper underplate on solder tails
 Electrical:
 Current rating: 0.5 Amps Max. / Per Contact
 Contact Resistance: 30 mΩ max.
 Insulation Resistance: 100M ohms min.
 Dielectric Withstanding Voltage: 500V AC for 1 minute
 Insertion force: 4.5kg Max
 Withdrawal force: 1.0~4.0kg Max
 Durability: 10,000 mating cycles
 Temperature Rating: Operating Temp: -40°C to +85°C
 Environmental: Lead free, RoHS compliant.



ADAM TECH

909 Railway Avenue, Union, NJ 07083
 Phone: 908-687-5000 Fax: 908-687-5710

UNLESS OTHERWISE SPECIFIED ALL DIMENSIONS ARE INCHES [MM] TOLERANCES: EXCEPT AS NOTED		INCHES		HILES	
.X	± .10	ØX	± .10		
.XX	± .020	ØXXX	± .015		
.XXX	± .015	ØXXXX	± .010		
APPROVALS		DATE		TITLE	
DRAWN	AY	3/10/15	MINI DISPLAY PORT RECEPTACLE, STRADDLE MOUNT, VERTICAL, 20 PIN, SEL-GOLD PLATED		
CHECKED	LL	3/10/15	SIZE	PART NO.	REV.
APPROVED			X	MDPC-S-VT-PCB	
REF:	S00097C	SCALE:	NTS	SHEET	1 OF 1