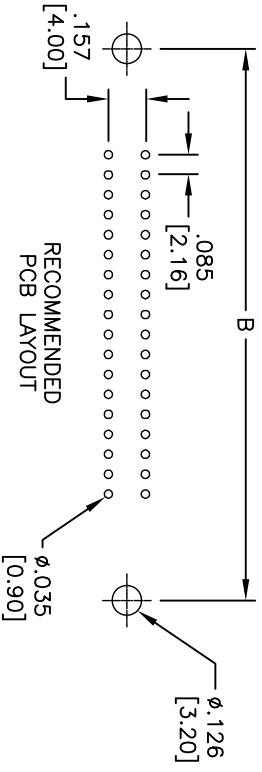
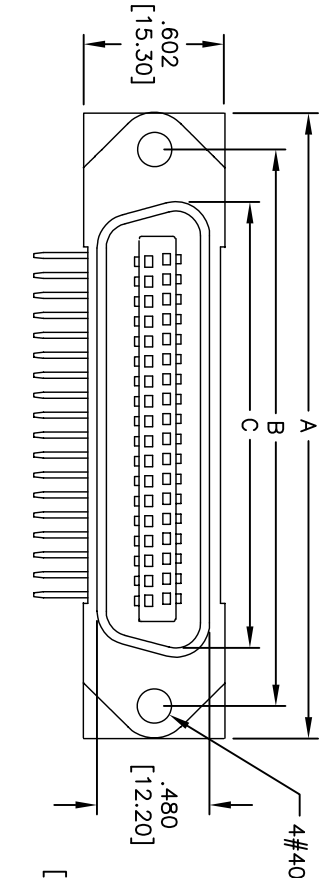
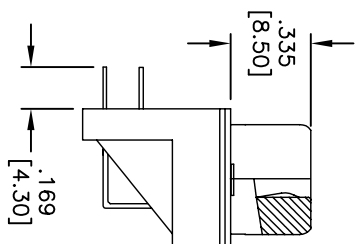
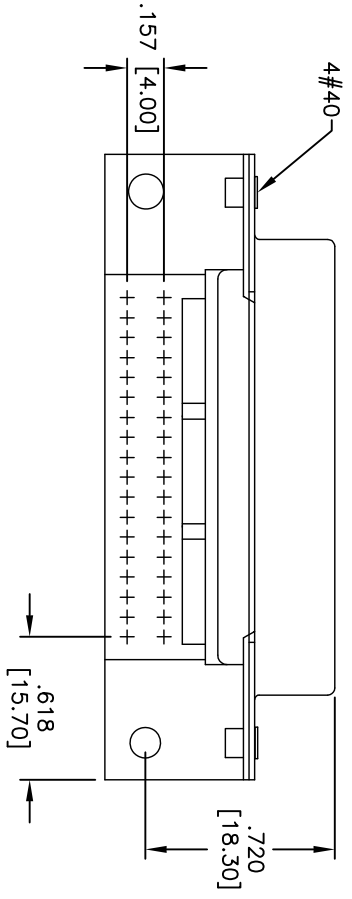


Rev	AWO #	Description	Date	Appr
-		RELEASED	5/18/05	
A		REDRAWN	2/27/13	
B		UPDATE SHAPE	9/17/14	AY

APPROVED: _____
 DATE: _____ TITLE: _____



RECOMMENDED
PCB LAYOUT



MRXX	NO. OF CONTACTS	DIMENSIONS		
		A	B	C
MR14	14	1.728 [43.90]	1.417 [36.00]	1.004 [25.50]
MR24	24	2.154 [54.70]	1.843 [46.80]	1.429 [36.30]
MR36	36	2.665 [67.70]	2.350 [59.70]	1.941 [49.30]
MR50	50	3.260 [82.80]	2.949 [74.90]	2.535 [64.40]

SPECIFICATIONS:
 Material: Insulator: PBT, glass reinforced, rated UL 94V-0
 Insulator color: Blue
 Contacts: Phosphor Bronze
 Hood: Steel, Nickel plated
 Shell: Steel, Nickel plated
 Plating: Gold flash over Nickel underplate on mating area, Tin over Copper underplate on tails
 Electrical: Current rating: 1 Amp max
 Contact resistance: 25 mohms max
 Insulation resistance: 1,000 Mohms min
 Dielectric withstanding voltage: 1,000 VAC for 1 minute
 Temperature Rating: Operating temperature: -55°C to +105°C
 Environmental: Lead free, RoHS compliant

ADAM TECH
 909 Rahway Avenue, Union, NJ 07083
 Phone: 908-687-5000 Fax: 908-687-5710

TITLE: MINIATURE RIBBON PLUG
 RIGHT ANGLE PCB, #4-40 INSERTS

UNLESS OTHERWISE SPECIFIED ALL DIMENSIONS ARE INCHES [MM]	
TOLERANCES: EXCEPT AS NOTED	
INCHES	HOLES
.X ± .10	ØXX ± .10
.XX ± .020	ØXXX ± .015
.XXX ± .015	ØXXXX ± .010
APPROVALS	DATE
DRAWN SS	5/18/05
CHECKED	
APPROVED	

SIZE	PART NO.	REV.
X	MRXX-PD-34	B
REF: S00033T	SCALE: NTS	SHEET 1 OF 1

