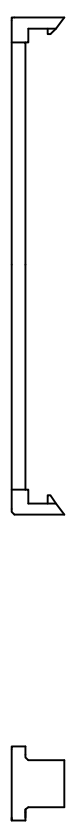
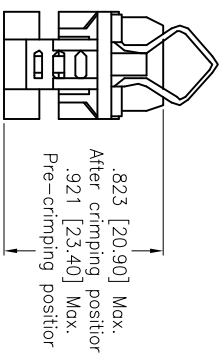
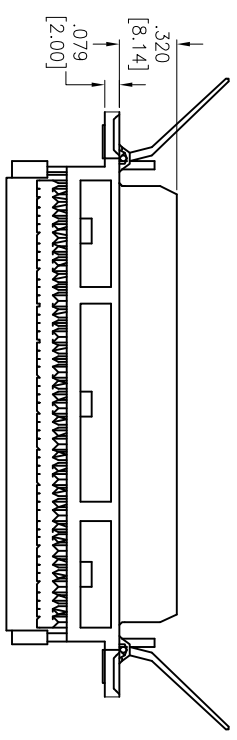
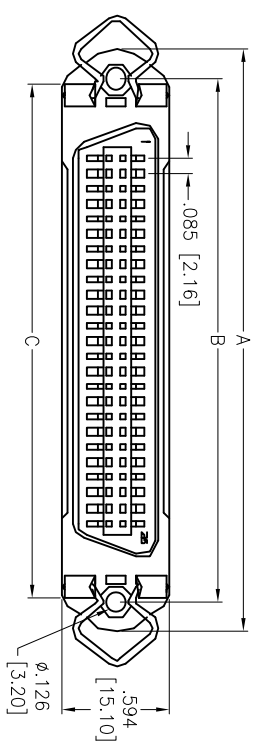


APPROVED: _____
 DATE: _____ TITLE: _____

Rev	AWO #	Description	Date	Appr
-		RELEASED	5/20/05	
A		REDRAWN	03/15/12	



MRXX	NO. OF CONTACTS	DIMENSIONS		
		A	B	C
MR24	24	2.154 [54.70]	1.842 [46.78]	1.809 [45.95]
MR36	36	2.669 [67.80]	2.352 [59.74]	2.315 [58.80]
MR50	50	3.260 [82.80]	2.947 [74.85]	2.923 [74.25]

ADAM TECH

909 Rahway Avenue, Union, NJ 07083
 Phone: 908-687-5000 Fax: 908-687-5710

TITLE: IDC MINIATURE RIBBON SOCKET
 METAL SHELL

SPECIFICATIONS:
 Material: Insulator: PBT, glass reinforced, rated UL 94V-0
 Insulator color: Blue
 Contacts: Brass
 Shell: Steel, Nickel plated
 Plating: Gold flash over Nickel underplate on mating area, Tin over Copper underplate on tails
 Electrical: Operating voltage: 250 VAC max
 Current rating: 3 Amp max
 Contact resistance: 20 mohms max
 Insulation resistance: 1,000 Mohms min
 Dielectric withstanding voltage: 1,000 VAC for 1 minute
 Temperature Rating: Operating temperature: -55°C to +105°C
 Environmental: Lead free, RoHS compliant



UNLESS OTHERWISE SPECIFIED ALL DIMENSIONS ARE INCHES [MM]		TOLERANCES: EXCEPT AS NOTED	
INCHES		HOLDS	
.X	± .10	ØX	± .10
.XX	± .020	ØXX	± .015
.XXX	± .015	ØXXX	± .010
APPROVALS	DATE		
DRAWN	SS	5/20/05	
CHECKED			
APPROVED			
SIZE	PART NO.	MRXX-SF-1	REV. A
REF:	S00087T	SCALE: NTS	SHEET 1 OF 1