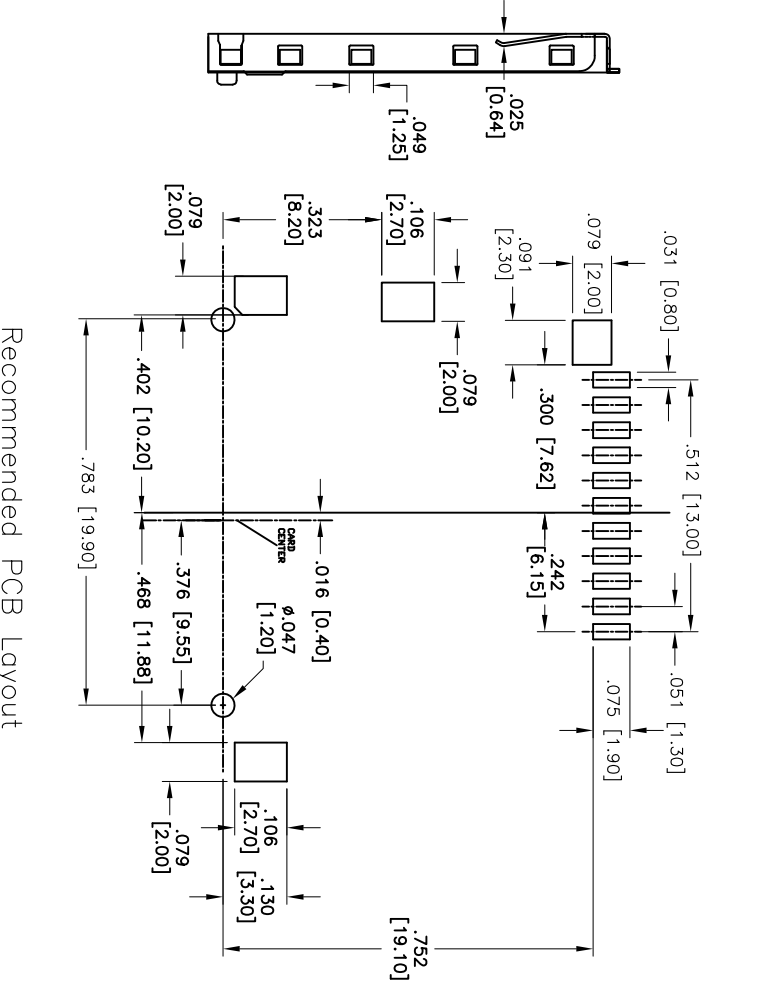
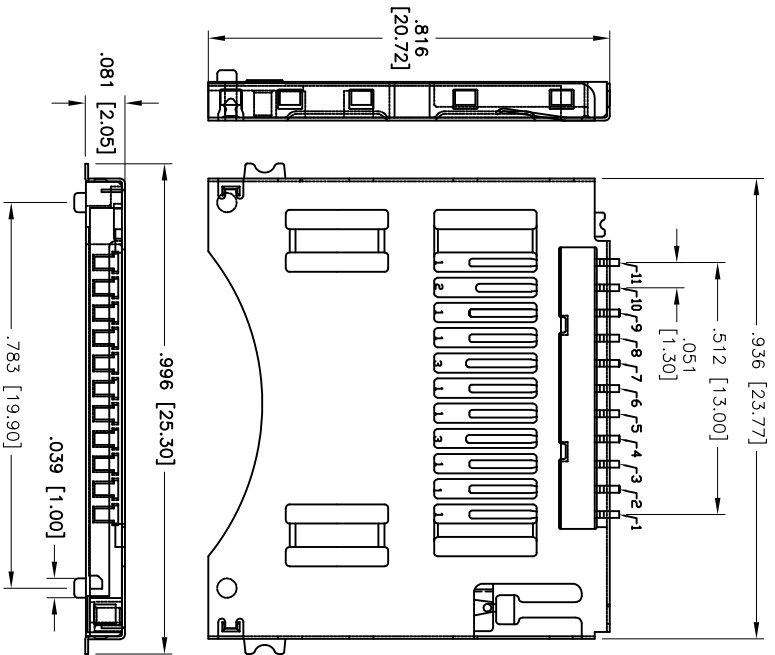


Rev	AWO #	Description	Date	Appr
-		RELEASED	11/30/10	

APPROVED: \_\_\_\_\_  
 DATE: \_\_\_\_\_ TITLE: \_\_\_\_\_



Recommended PCB Layout

1	DAT1	MIDDLE
2	DAT0	MIDDLE
3	VSS	MIDDLE
4	CLK	MIDDLE
5	VDD	LONG
6	NC	MIDDLE
7	NC	MIDDLE
8	VSS	LONG
9	CM1	MIDDLE
10	CD/DAT3	SHORT
11	DAT2	MIDDLE

**SPECIFICATIONS:**

Material: Insulator: Hi-temp thermoplastic, rated UL 94V-0  
 Insulator color: Black  
 Contacts: Phosphor Bronze  
 Plating: Gold Flash over Nickel underplate on contact area, Tin over Copper underplate on SMT tails  
 Electrical: Current rating: 0.5 Amps max  
 Contact resistance: 80 mohms max.  
 Insulation resistance: 1000 Mohms min @ 500V DC  
 Dielectric withstanding voltage: 500 VAC for 1 minute  
 Temperature Rating: Operating temperature: -25°C to +85°C  
 Environmental: Lead free, RoHS compliant.



UNLESS OTHERWISE SPECIFIED  
 ALL DIMENSIONS ARE INCHES [MM]  
 TOLERANCES: EXCEPT AS NOTED  
 INCHES HOLES  
 .X ± .10 Ø.X ± .10  
 .XX ± .020 Ø.XX ± .015  
 .XXX ± .015 Ø.XXX ± .010

**ADAM TECH**  
 909 Ratway Avenue, Union, NJ 07083  
 Phone: 908-687-5000 Fax: 908-687-5710

APPROVALS	DATE	TITLE	SIZE	PART NO.	REV.
DRAWN AY	11/30/10	MINI SD SOCKET, PUSH-PUSH TYPE REVERSE MOUNT	X	MSDPR-11-C-SG	-
CHECKED SC	11/30/10				
APPROVED					