

6

5

4

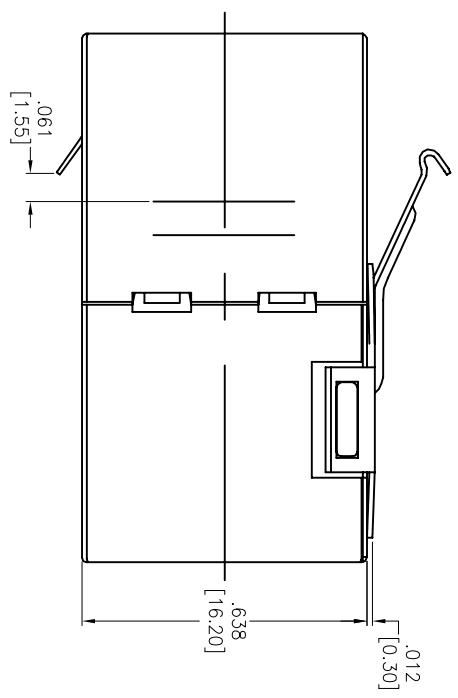
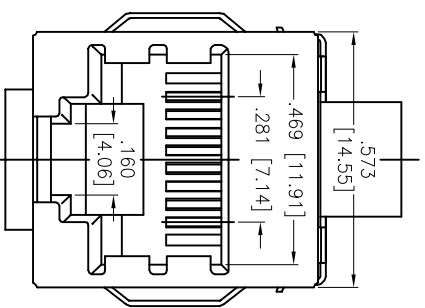
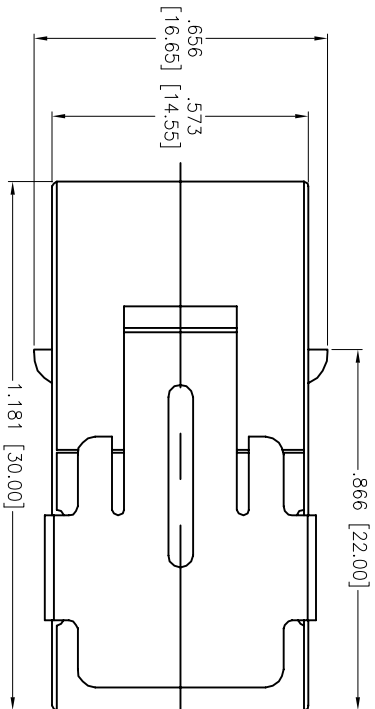
3

2

1

APPROVED: _____
 DATE: _____ TITLE: _____

Rev	AWO #	Description	Date	Appr
-		RELEASED	5/12/08	
A		REDRAWN	06/01/12	
B		ADDED SPEC.	7/9/14	AV/STY



X	PLATING
0	15 µin Gold
1	30 µin Gold
2	50 µin Gold

SPECIFICATIONS:
Material:
 Insulator: ABS, rated UL 94V-0
 Insulator color: Black
 Contacts: Phosphor Bronze
 Shield: Stainless Steel
Plating:
 Gold over Nickel underplate on contact area,
 Tin over Copper underplate on PCB tails
 (See chart for thickness)
Electrical:
 Operating voltage: 125 VAC max
 Current rating: 1.5 Amps max
 Contact resistance: 35 mohms max
 Insulation resistance: 1,000 Mohms min @ 500 VDC
 Dielectric withstanding voltage: 1,000 VAC for 1 minute
Temperature Rating:
 Operating temperature: 0°C to +70°C
 Environmental:
 Lead free, RoHS compliant

UNLESS OTHERWISE SPECIFIED
 ALL DIMENSIONS ARE IN INCHES [MM]
 TOLERANCES: EXCEPT AS NOTED
 INCHES HOLES
 .X ± .10 Ø.X ± .10
 .XX ± .020 Ø.XXX ± .015
 .XXX ± .015 Ø.XXXX ± .010
 APPROVALS DATE

ADAM TECH
 909 Ratway Avenue, Union, NJ 07083
 Phone: 908-687-5000 Fax: 908-687-5710
 TITLE: MODULAR COUPLER, 8P8C TO 8P8C,
 FILLY SHIELDED, CAT 5E

DRAWN	SS	5/12/08	SIZE	PART NO.	REV.
CHECKED			X	MTJC-88-X-B-S	B
APPROVED			REF:	S00036C	
			SCALE:	NTS	SHEET 1 OF 1

6

5

4

3

2

1