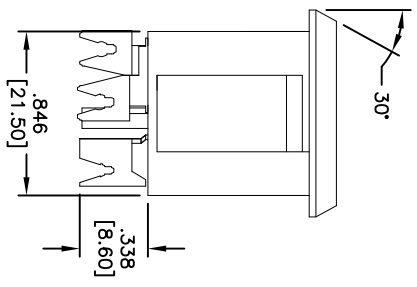
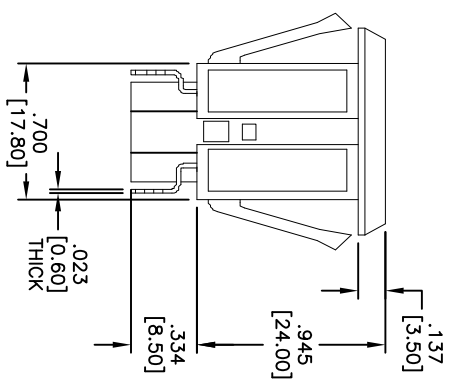
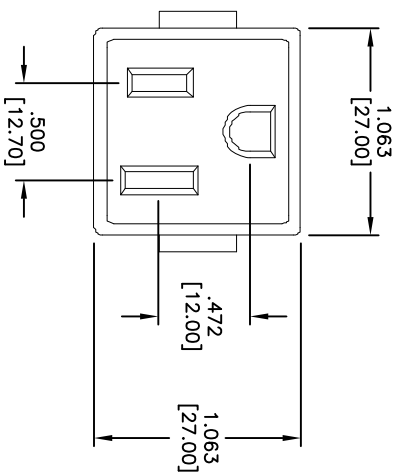
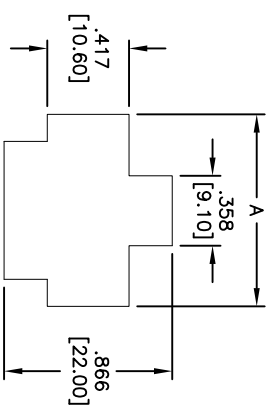


Rev	AWO #	Description	Date	Appr
-		RELEASED	9/13/07	

APPROVED: _____
 DATE: _____ TITLE: _____



PANEL THICKNESS	DIM. A
.031 [0.80]	.945 [24.00]
.039 [1.00]	.968 [24.60]
.047 [1.20]	.992 [25.20]
.063 [1.60]	1.031 [26.20]



RECOMMENDED
 PANEL CUT-OUT

SPECIFICATIONS:

- Material: Insulator: Nylon 66, rated UL 94V-2
- Insulator color: Black
- Contacts: Brass
- Plating: Nickel over Copper underplate overall
- Electrical: Operating voltage: 125 VAC
- Current rating: UL & CSA: 15 Amps max.
- Contact resistance: 30 mohms max.
- Insulation resistance: 1000 Mohms min. @ 500 VDC
- Dielectric withstanding voltage: 2,000 VAC for 1 minute
- Temperature Rating: Operating temperature: -25°C to +70°C
- Recommended wire size: 12-14 AWG solid
- Environmental: Lead free, RoHS Compliant

ADAM TECH
 909 Rahway Avenue, Union, NJ 07083
 Phone: 908-687-5000 Fax: 908-687-5710

TITLE: NEMA RECEPTACLE

UNLESS OTHERWISE SPECIFIED ALL DIMENSIONS ARE INCHES [MM]	
TOLERANCES: EXCEPT AS NOTED	HOLE
.X ± .10	± .10
.XX ± .020	± .015
.XXX ± .015	± .010
APPROVALS	DATE
DRAWN SS	9/13/07
CHECKED	
APPROVED	

SIZE	PART NO.	REV.
X	NEMA-5-2	-
REF:	SCALE: NTS	SHEET 1 OF 1