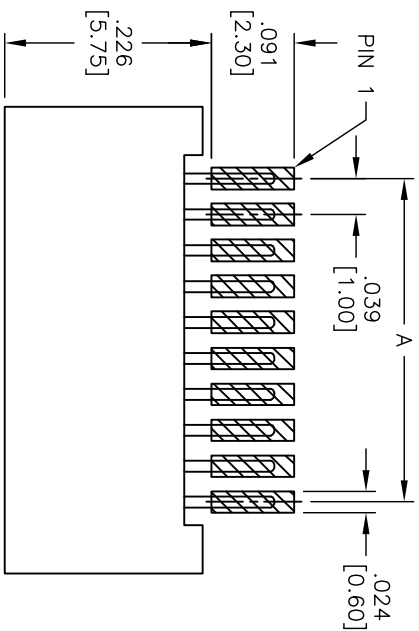
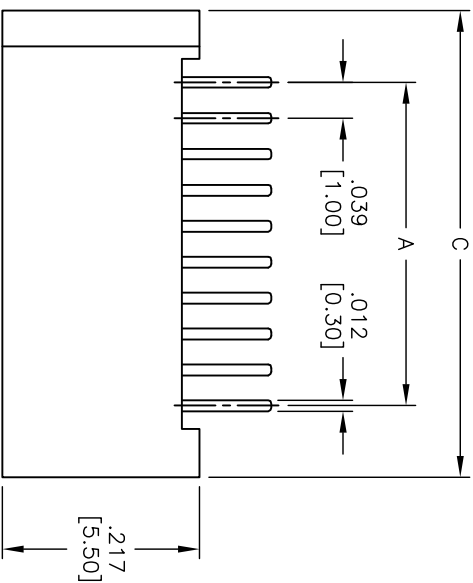


APPROVED: _____

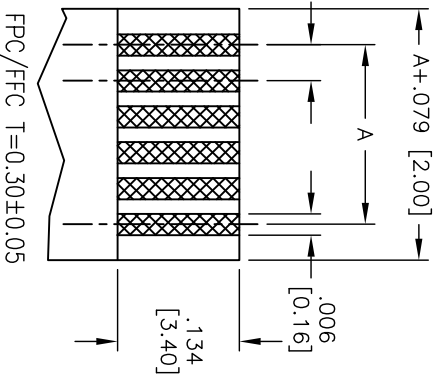
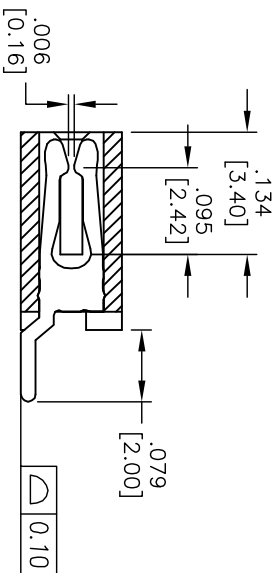
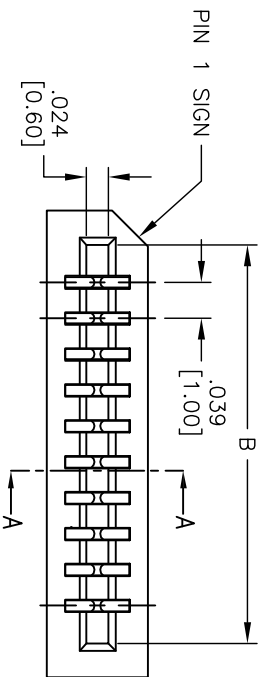
DATE: _____

TITLE: _____

Rev	AWO #	Description	Date	Appr
-		RELEASED	3/23/05	
A		REDRAWN	8/15/14	HR/SL



RECOMMEND PCB LAYOUT



SPECIFICATIONS:

Material:

Insulator: Hi-Temp, thermoplastic, rated UL 94V-0

Insulator color: Black

Contacts: Phosphor Bronze

Plating:

Tin over Copper underplate overall

Electrical:

Operating voltage: 100 VAC max

Current rating: 0.5 Amps max

Contact resistance: 50 mohms max initial

Insulation resistance: 1000 Mohms min

Dielectric withstanding voltage: 500 VAC for 1 minute

Temperature Rating:

Operating temperature: -55°C to +85°C

Environmental:

Lead free, RoHS compliant

Positions: 3 thru 36
 A = .039 [1.00] x No. of Spaces
 B = A + .082 [2.10]
 C = A + .157 [4.00]

UNLESS OTHERWISE SPECIFIED
 ALL DIMENSIONS ARE IN INCHES [MM]
 TOLERANCES: EXCEPT AS NOTED
 INCHES Holes ±.10
 .XX ±.020
 .XXX ±.015
 APPROVALS DATE

ADAM TECH
 909 Railway Avenue, Union, NJ 07083
 Phone: 908-687-5000 Fax: 908-687-5710
 TITLE: LIF FLEX CIRCUIT CONNECTOR
 SIDE ENTRY, SMT

DRAWN	SS	3/23/05	SIZE	PART NO.	PCB-C-XX-SA-SMT	REV.
CHECKED	AY	7/28/10	X			A
APPROVED			REF:	S00Q43T	SCALE: NTS	SHEET 1 OF 1

