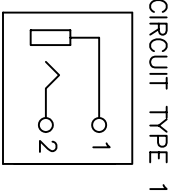
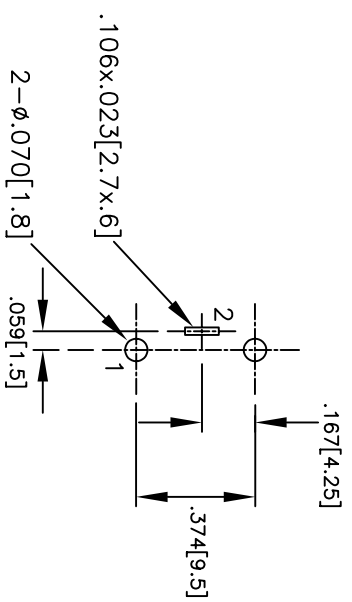
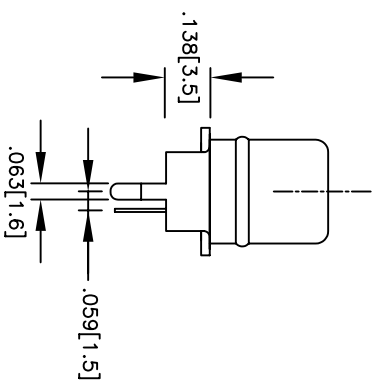
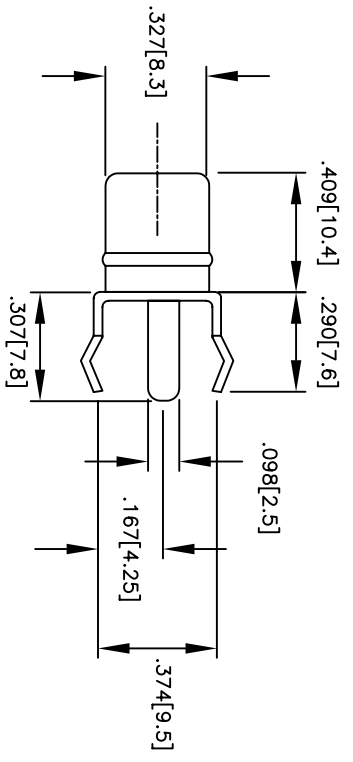
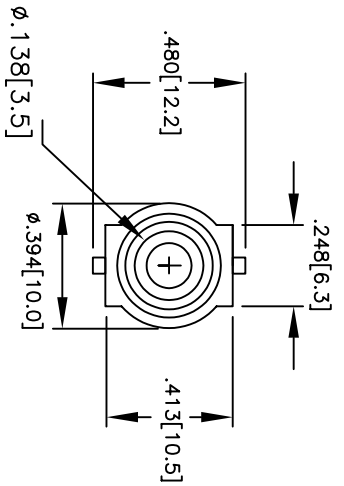


APPROVED: \_\_\_\_\_  
 DATE: \_\_\_\_\_ TITLE: \_\_\_\_\_

Rev	AWO #	Description	Date	Appr
-		RELEASED	03/07/05	
A		UPDATED BARREL SHAPE	11/07/05	BAS



P/N	COLOR
RCA-16-1-B	BLACK
RCA-16-1-R	RED
RCA-16-1-W	WHITE
RCA-16-1-Y	YELLOW
RCA-16-1-BL	BLUE
RCA-16-1-G	GREEN

PCB LAYOUT  
(BOTTOM VIEW)

**SPECIFICATIONS:**  
**Material:**  
 Insulator: PBT, Glass reinforced, rated UL 94V-0  
 Insulator colors: See color chart  
 Bushing: Brass, Nickel plated  
 Contacts: Brass  
**Plating:**  
 Tin or silver over Copper underplate  
**Electrical:**  
 Operating voltage: 12 VDC max.  
 Current rating: 1 Amp max.  
 Contact resistance: 30 mohms max. initial  
 Insulation resistance: 100 Mohms min.  
 Dielectric withstand voltage: 500 VAC for 1 minute  
**Temperature Rating:**  
 Operating temperature: -25°C to +85°C

**ADAM TECH**  
 909 Rahway Avenue, Union, NJ 07083  
 Phone: 908-687-5000 Fax: 908-687-5710

TITLE  
 RCA JACK, 1 PORT, VERTICAL

UNLESS OTHERWISE SPECIFIED ALL DIMENSIONS ARE INCHES [MM]	
TOLERANCES: EXCEPT AS NOTED	HOLDS
.X ± .10	ØX ± .10
.XX ± .020	ØXX ± .015
.XXX ± .015	ØXXX ± .010
APPROVALS	DATE
DRAWN	SS
CHECKED	
APPROVED	

SIZE	PART NO.	REV.
X	RCA-16-1-X	-
REF:	SCALE: NTS	SHEET 1 OF 1

6 5 4 3 2 1