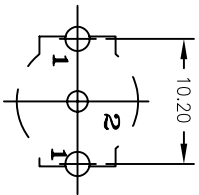
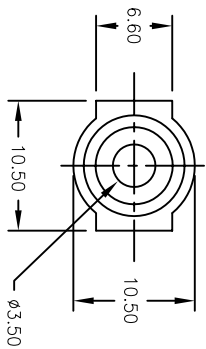
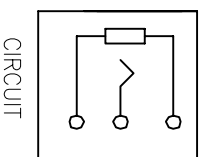
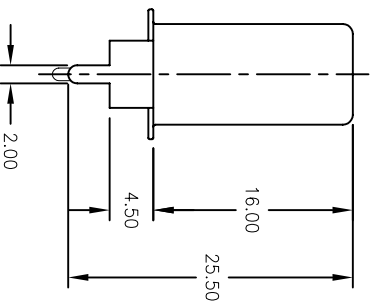
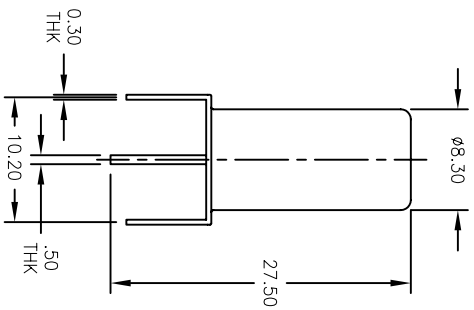


| Rev | AWO # | Description | Date   | Appr |
|-----|-------|-------------|--------|------|
| -   |       | RELEASED    | 7/7/05 |      |

APPROVED: \_\_\_\_\_  
 DATE: \_\_\_\_\_ TITLE: \_\_\_\_\_



PC Board Layout  
(Top View)



CIRCUIT

| P/N         | COLOR  |
|-------------|--------|
| RCA-17-5-B  | BLACK  |
| RCA-17-5-R  | RED    |
| RCA-17-5-W  | WHITE  |
| RCA-17-5-Y  | YELLOW |
| RCA-17-5-BL | BLUE   |
| RCA-17-5-G  | GREEN  |

**SPECIFICATIONS:**

**Material:**

Housing: ABS, UL 94HB, Color: See Chart

Contacts: Copper Alloy

**Plating:**

Outer Contact (Barrel): Nickel Plated

Terminals: Tin-Lead Plated

**Electrical:**

Rating: 34 VAC, 2 Amps

Contact resistance: 30 mΩ max

Insulation resistance: 100 MΩ min at 500 VDC

Dielectric withstanding voltage: 500 VAC for 1 minute

**Environmental:**

Operating Temperature: -25°C to +70°C

UNLESS OTHERWISE SPECIFIED  
 ALL DIMENSIONS ARE MM [INCHES]  
 TOLERANCES: EXCEPT AS NOTED  
 INCHES

|      |        |       |        |
|------|--------|-------|--------|
| .X   | ± .10  | ØX    | ± .10  |
| .XX  | ± .020 | ØXXX  | ± .015 |
| .XXX | ± .015 | ØXXXX | ± .010 |

APPROVALS

| DATE |
|------|
|      |

**ADAM TECH**  
 909 Rahway Avenue, Union, NJ 07083  
 Phone: 908-687-5000 Fax: 908-687-5710

TITLE: RCA JACK, VERTICAL

|          |    |        |
|----------|----|--------|
| DRAWN    | SS | 7/7/05 |
| CHECKED  |    |        |
| APPROVED |    |        |

|      |            |              |
|------|------------|--------------|
| SIZE | PART NO.   | REV.         |
| X    | RCA-17-5-X |              |
| REF: | SCALE: NTS | SHEET 1 OF 1 |