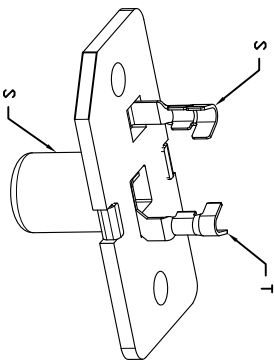
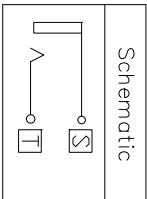
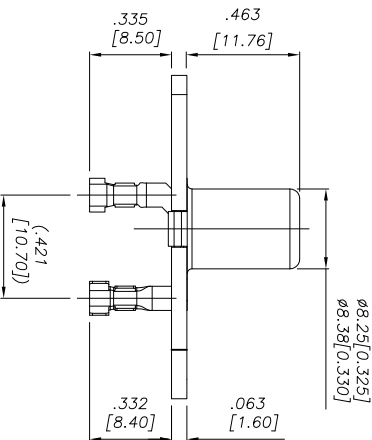
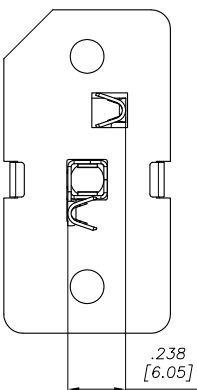
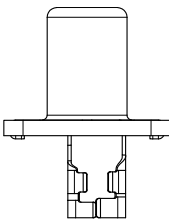
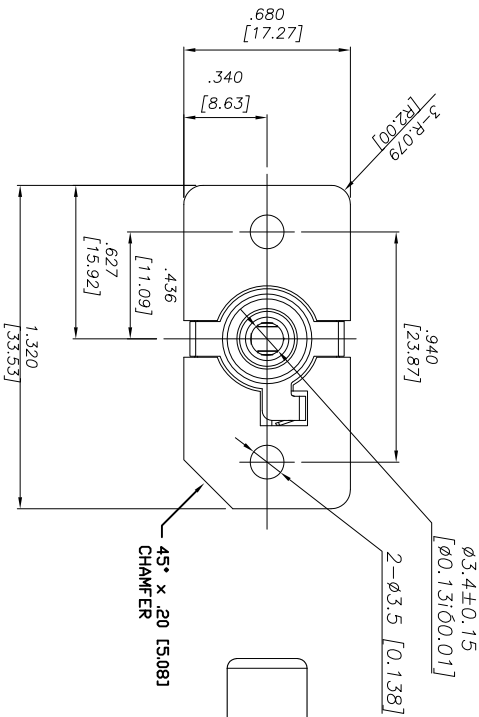
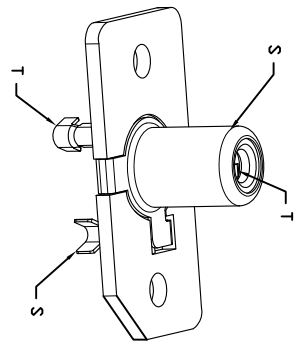


APPROVED: \_\_\_\_\_  
 DATE: \_\_\_\_\_ TITLE: \_\_\_\_\_

Rev	AWO #	Description	Date	Appr
-	8155	RELEASED	1/19/2010	
A	8155	UPDATED TOLERANCE BLOCK	1/27/10	



**SPECIFICATIONS:**

**Material:**  
 Insulator: Hi-Temp Nylon 6T, UL 94V-0, color white  
 (One piece design mounting plate / bushing)  
 Bushing: Brass, Nickel Plated  
 Contacts: Phosphor Bronze  
 Contact plating:  
 Tin over Copper underplate

**Electrical:**  
 Voltage Rating: 540V DC max.  
 Contact resistance: 30 mohms max.  
 Insulation resistance: 100 Mohms min @1000V DC  
 Dielectric withstanding voltage: 700 VAC for 1 minute

**Mechanical:**  
 Life: 1000 Cycles  
 Insertion / Withdrawal: 3-30N  
 Recommended wire size: 22 - 24 Awg

**Environmental:**  
 Temperature rating:  
 Operating temperature: -40°C to +175°C  
 Recommended soldering temp: 260°C for 5 sec.  
 Lead free, RoHS compliant.

**ADAM TECH**

909 Railway Avenue, Union, NJ 07083  
 Phone: 908-687-5000 Fax: 908-687-5710

RCA JACK, SINGLE PORT, VERTICAL,  
 PANEL TYPE, CRIMP CONNECTIONS

UNLESS OTHERWISE SPECIFIED ALL DIMENSIONS ARE INCHES [MM] TOLERANCES: EXCEPT AS NOTED	
INCHES	HOLES
.X ± .10	ØX ± .10
.XX ± .010	ØXX ± .010
.XXX ± .005	ØXXX ± .005
APPROVALS	DATE
DRAWN SS	1/19/2010
CHECKED	
APPROVED	

TITLE	RCA JACK, SINGLE PORT, VERTICAL, PANEL TYPE, CRIMP CONNECTIONS	
SIZE	PART NO.	REV.
X	RCA-22-1W-C4	A
REF:	SCALE: NTS	SHEET 1 OF 1

6

5

4

3

2

1