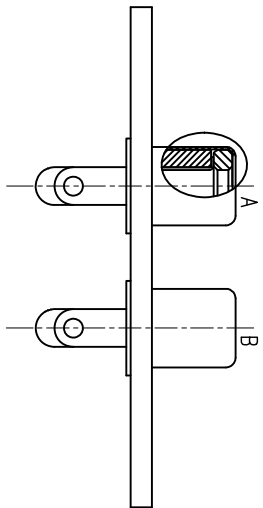
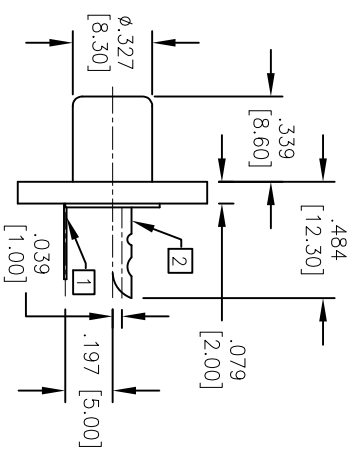
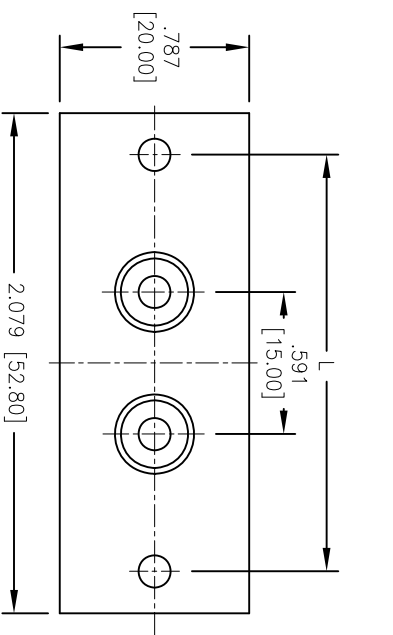
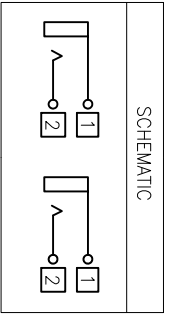


Rev	AWO #	Description	Date	Appr
-		RELEASED	7/12/11	

APPROVED: _____
 DATE: _____ TITLE: _____



ADAM P/N	LX (DIM.)	A and B (X/X)
RCA-31-1-W/R-L1	L1=1.575 [40.00]	W= WHITE
RCA-31-1-R/W-L1		R= RED
RCA-31-1-W/R-L2	L2=1.732 [44.00]	W= WHITE
RCA-31-1-R/W-L2		R= RED



SPECIFICATIONS:

Material:

Housing: ABS, color Black

Insulator colors: Black

Out contacts terminal: Brass, Tin plated

Center contacts: Brass, Tin plated

Outer contacts: Brass, Nickel plated

Electrical:

Operation voltage: 50V DC

Current rating: 0.3 Amps

Contact resistance: 30 mohms max.

Insulation resistance: 100 Mohms min

Dielectric withstanding voltage: 500 VAC for 1 minute

Temperature rating:

Lead free, RoHS compliant.
 Recommended soldering temp: 235°C for 5 sec.



UNLESS OTHERWISE SPECIFIED ALL DIMENSIONS ARE INCHES [MM] TOLERANCES: EXCEPT AS NOTED	
X	± .10
.XX	± .020
.XXX	± .015
∅XX	∅XX ± .010
∅XXX	∅XXX ± .010
APPROVALS	DATE
DRAWN AY	7/12/11
CHECKED SC	7/12/11
APPROVED	

ADAM TECH
 909 Rahway Avenue, Union, NJ 07083
 Phone: 908-687-5000 Fax: 908-687-5710

TITLE: RCA JACK, VERTICAL, PCB
 RED/WHITE OR WHITE/RED

SIZE: X PART NO.: RCA-31-1-XIX-LX
 REF: S0002C SCALE: NTS SHEET 1 OF 1