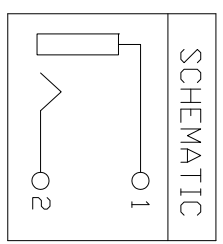
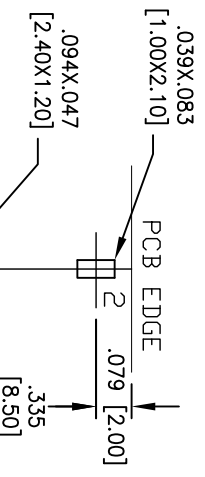
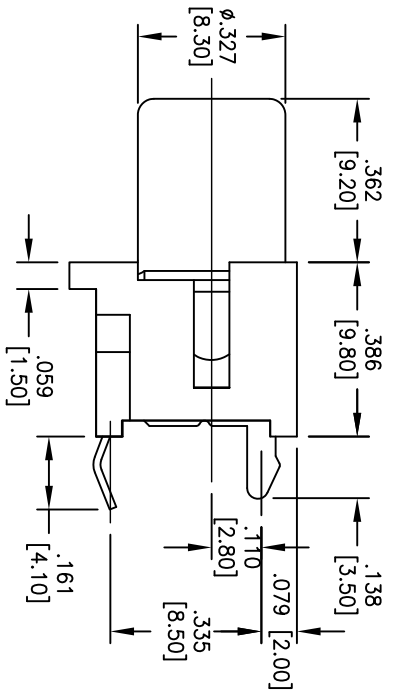
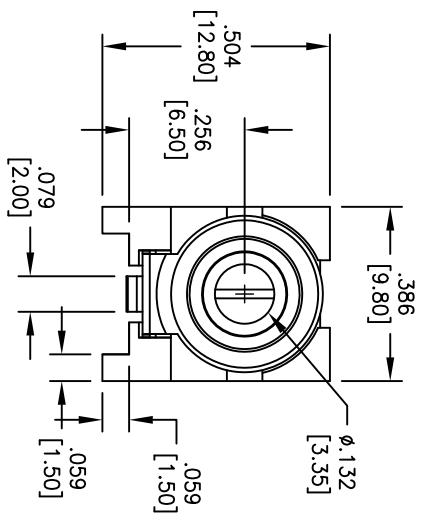


APPROVED: \_\_\_\_\_  
 DATE: \_\_\_\_\_ TITLE: \_\_\_\_\_

Rev	AWO #	Description	Date	Appr
-		RELEASED	12/10/04	
A	11941	REDRAWN	2/7/12	



PART NO.	COLOR
RCA-4-1-R	RED
RCA-4-1-B	BLACK
RCA-4-1-W	WHITE
RCA-4-1-Y	YELLOW

**SPECIFICATIONS:**

**Material:**  
 Insulator: PBT, Glass reinforced, rated UL 94V-0  
 Insulator colors: Red, Black, Yellow, White  
 Barrel: Brass, Nickel plated  
 Contacts: Brass

**Plating:**  
 Tin over Copper underplate overall  
**Electrical:**  
 Operating voltage: 12 VDC max.  
 Current rating: 2 Amp max.  
 Contact resistance: 30 Mohms max. initial  
 Insulation resistance: 100 Mohms min @ 500 VDC.  
 Dielectric withstanding voltage: 500 VAC for 1 minute

**Environmental:**  
 Lead free, RoHS compliant.

**ADAM TECH**  
 909 Rahway Avenue, Union, NJ 07083  
 Phone: 908-687-5000 Fax: 908-687-5710

TITLE: RCA JACK, VERTICAL, PCB

UNLESS OTHERWISE SPECIFIED ALL DIMENSIONS ARE INCHES [MM]	
TOLERANCES: EXCEPT AS NOTED	
INCHES	
.X ± .10	ØX ± .10
.XX ± .020	ØXX ± .015
.XXX ± .015	ØXXX ± .010
APPROVALS	DATE
DRAWN	SS
CHECKED	
APPROVED	

SIZE	PART NO.	REV.
X	RCA-4-1-X	A
REF:	S00095T	
SCALE:	NTS	
SHEET	1 OF 1	

