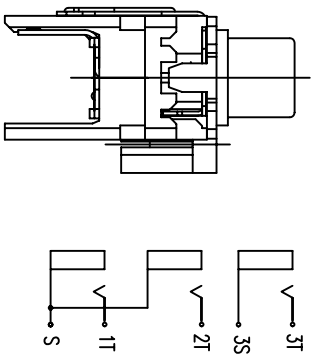
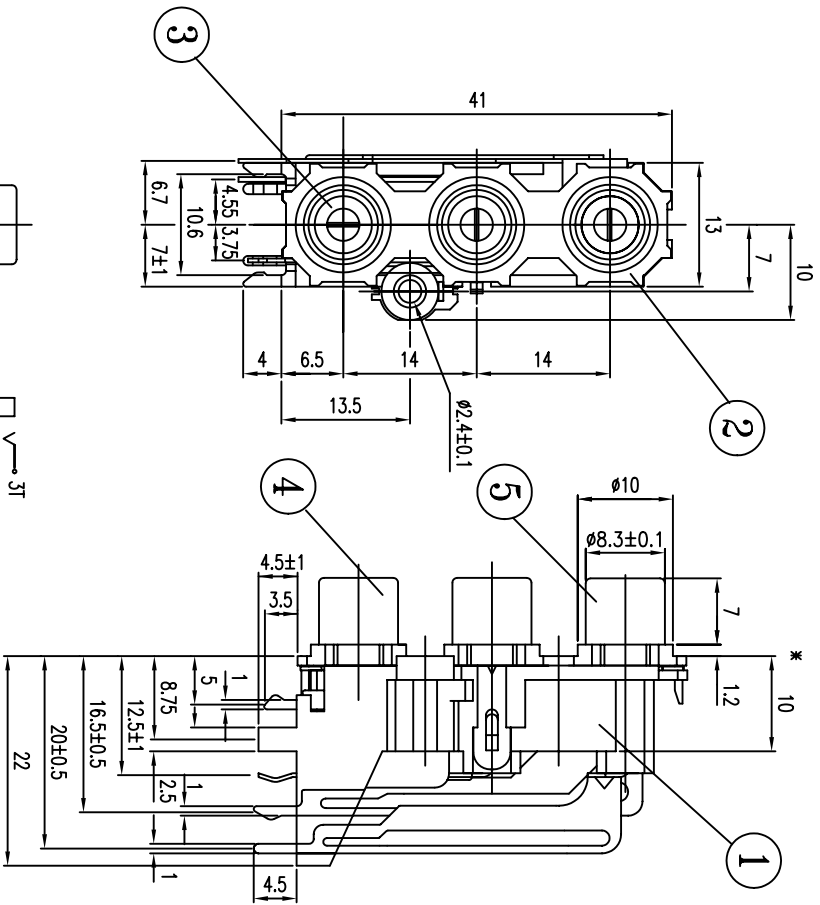


| Rev | AWO # | Description | Date | Appr |
|-----|-------|-------------|---------|------|
| - | | RELEASED | 8/13/04 | |

APPROVED: _____
 DATE: _____ TITLE: _____



| LTR | PART NAME | QTY | MATERIAL | REMARK |
|-----|---------------|-----|---------------|----------------------|
| 8 | TERMINAL | 1 | C2680 , t=0.5 | MB : Cu Cu/Sn PLATED |
| 7 | TERMINAL | 1 | C2680 , t=0.4 | MB : Cu Cu/Sn PLATED |
| 6 | TERMINAL | 1 | C2680 , t=0.4 | MB : Cu Cu/Sn PLATED |
| 5 | OUTER CONTACT | 1 | C2680 , t=0.4 | MB : Cu Cu/Sn PLATED |
| 4 | OUTER CONTACT | 1 | C2680 , t=0.4 | MB : Cu Cu/Sn PLATED |
| 3 | WASHER | 3 | ABS , UL-94HB | MB : Cu Cu/Sn PLATED |
| 2 | COVER | 1 | ABS , UL-94HB | BLACK |
| 1 | HOUSING | 1 | ABS , UL-94HB | |

HOLE LAYOUT (TOLERANCE #0.1)
 (BOTTOM VIEW)

UNLESS OTHERWISE SPECIFIED
 ALL DIMENSIONS ARE MM [INCHES]
 TOLERANCES: EXCEPT AS NOTED

| | | | |
|------|--------|------|--------|
| .X | ± .10 | ØX | ± .10 |
| .XX | ± .020 | ØXX | ± .015 |
| .XXX | ± .015 | ØXXX | ± .010 |

APPROVALS: _____ DATE: _____

DRAWN: SS 8/13/04

CHECKED: _____

APPROVED: _____

TITLE: RCA JACK, 3 PORT, RIGHT ANGLE
 PCB MOUNT

909 Railway Avenue, Union, NJ 07083
 Phone: 908-687-5000 Fax: 908-687-5710

ADAM TECH

| | | |
|------|-------------------|--------------|
| SIZE | PART NO. | REV. |
| X | RCA-V17-3-RMW-V-T | - |
| REF: | SCALE: NTS | SHEET 1 OF 1 |

6 5 4 3 2 1

A B C D A B C D