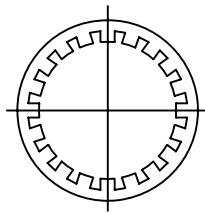
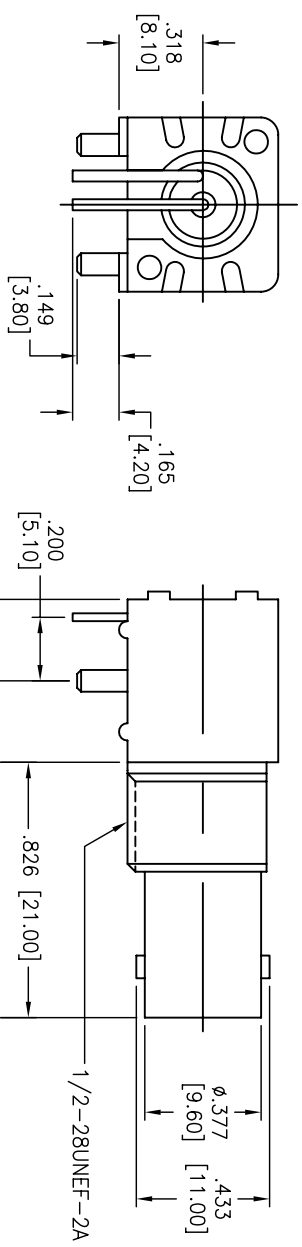
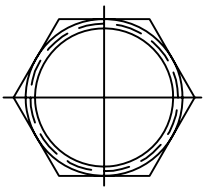


APPROVED: \_\_\_\_\_  
 DATE: \_\_\_\_\_ TITLE: \_\_\_\_\_

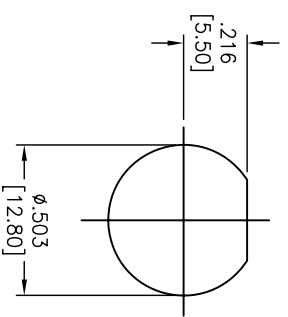
Rev	AWO #	Description	Date	Appr
-	7659	RELEASED	3/26/07	
A		ADDED HOUSING COLOR	09/06/07	



LOCKWASHER  
 PHOSPHER BRONZE  
 NICKEL PLATE

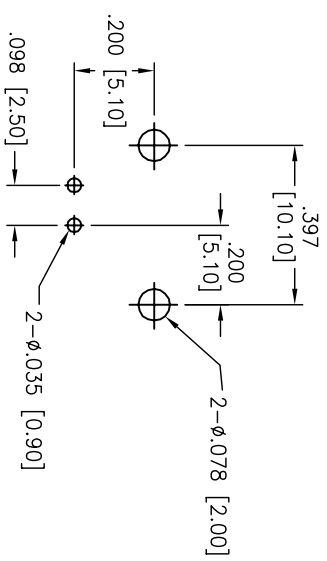


1/2-28UNEF-2B  
 CLAMP NUT  
 BRASS, NICKEL PLATE



RECOMMENDED  
 PANEL CUTOUT  
 MAXIMUM PANEL THICKNESS: .216 [5.50]  
 RECOMMENDED MOUNTING TORQUE:  
 12 INCH-POUNDS MAX.

RECOMMENDED P.C.B. LAYOUT  
 RIGHT ANGLE MOUNT



**SPECIFICATIONS**

**Material:**  
 Housing: PBT, rated 94V-0, color: black  
 Contact insulation: Polypropylene, color white.  
 Contacts: Phosphor Bronze, Gold plated.  
 Body: Zinc Alloy, Nickel plated  
**Electrical**  
 Nominal Impedance: 75 Ohms  
 Frequency Range: 0 – 6 GHz  
 Maximum Peak Voltage: 500V  
 Insulation Resistance: 5000 Mohms min @ 500 VDC  
 Dielectric Withstanding Voltage: 1000V AC for 1 min.  
**Environmental:**  
 Lead free, RoHS compliant.  
 Recommended soldering temp: 235°C. for 5 sec.



UNLESS OTHERWISE SPECIFIED  
 ALL DIMENSIONS ARE MM [INCHES]  
 TOLERANCES: EXCEPT AS NOTED

INCHES	HOLES
X ± .10	ØX ± .015
.XX ± .020	ØXX ± .015
.XXX ± .015	ØXXX ± .010

APPROVALS

DATE	DATE
3/26/07	

**ADAM TECH**  
 909 Rahway Avenue, Union, NJ 07083  
 Phone: 908-687-5000 Fax: 908-687-5710

TITLE: 75 OHM, BNC CONNECTOR  
 PCB / PANEL MOUNT JACKS

SIZE	PART NO.	REV.
X	RF1-01A-PP-00-75-HDW	A

DRAWN: BW  
 CHECKED:  
 APPROVED:

SCALE: NTS SHEET 1 OF 1