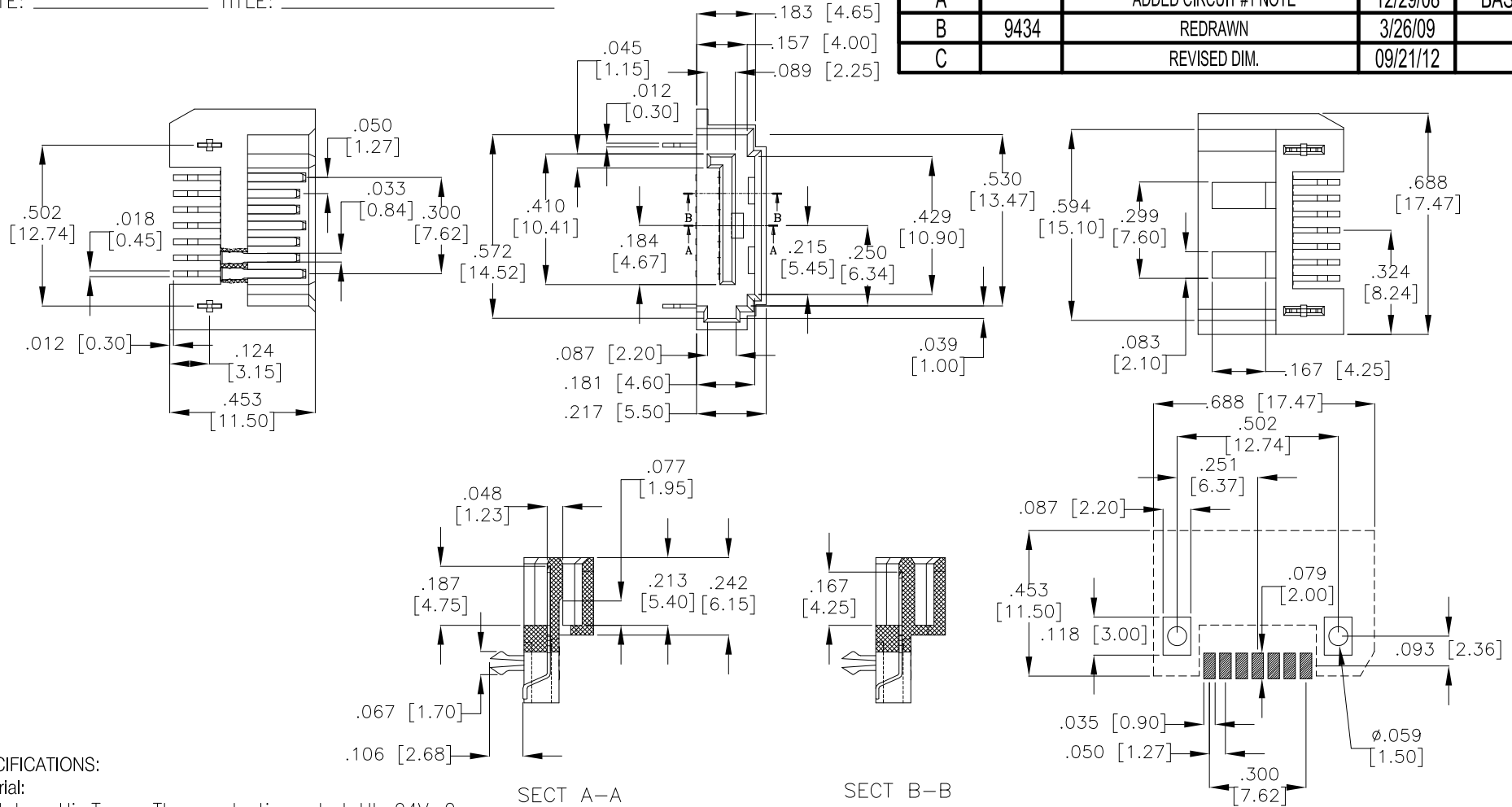


APPROVED: _____

DATE: _____ TITLE: _____

Rev	AWO #	Description	Date	Appr
-		RELEASED	5/23/05	
A		ADDED CIRCUIT #1 NOTE	12/29/08	BAS
B	9434	REDRAWN	3/26/09	
C		REVISED DIM.	09/21/12	



SECT A-A

SECT B-B

RECOMMEND PCB LAYOUT

SPECIFICATIONS:

Material:

Insulator: Hi-Temp Thermoplastic, rated UL 94V-0

Insulator color: Black

Contacts: Phosphor Bronze

Plating:

Gold over Nickel underplate on contact area, Tin over Copper

underplate on tails

Electrical:

Current rating: 1.5 Amps max per contact

Contact resistance: 30 mohms max

Insulation resistance: 1000 Mohms min

Dielectric withstanding voltage: 500 VAC for 1 minute

Temperature Rating:

Operating temperature: -55°C to +85°C

Environmental:

Lead free, RoHS compliant.



UNLESS OTHERWISE SPECIFIED ALL DIMENSIONS ARE INCHES [MM] TOLERANCES: EXCEPT AS NOTED		ADAM TECH 909 Rahway Avenue, Union, NJ 07083 Phone: 908-687-5000 Fax: 908-687-5710	
INCHES HOLES			
.X ± .10	∅X ± .10	TITLE SATA CONNECTOR, 7P, TYPE A LEFT POLARIZATION, SMT, W/ KEY	
.XX ± .020	∅XX ± .015		
.XXX ± .015	∅XXX ± .010		
APPROVALS		DATE	
DRAWN	SS	5/23/05	
CHECKED			
APPROVED			
SIZE X	PART NO. SATA-A-PL-SMT-K	REV. C	
REF: S00078T	SCALE: NTS	SHEET 1 OF 1	