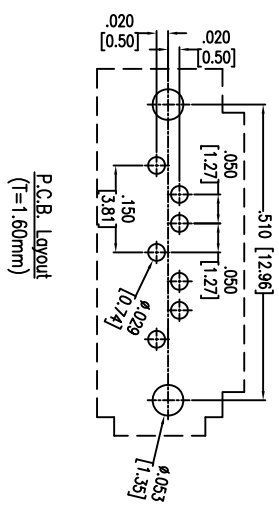
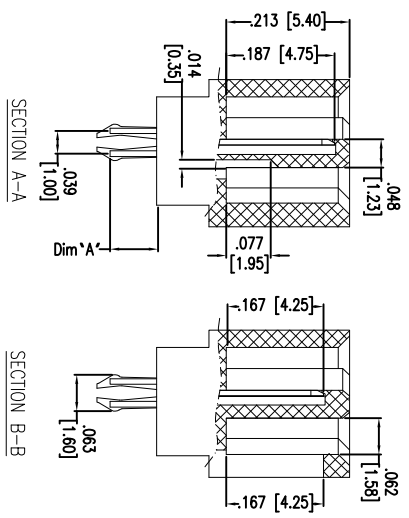
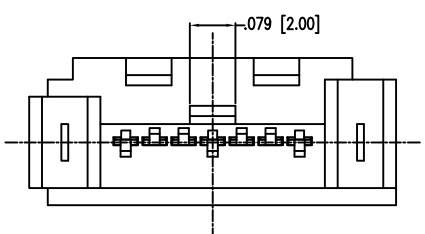
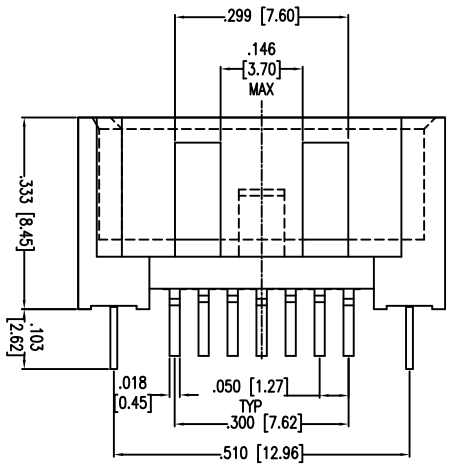
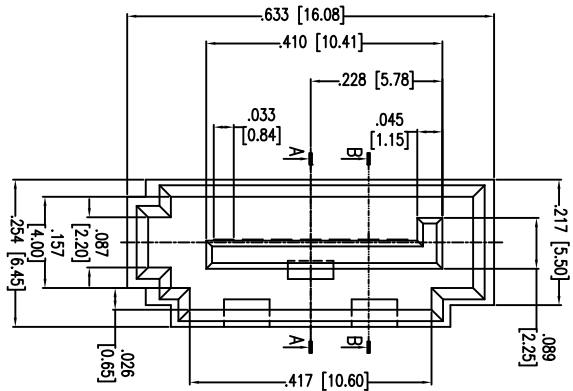


APPROVED: _____ DATE: _____
 TITLE: _____

Rev	AWO #	Description	Date	Appr
-		RELEASED	2/24/11	
A		REVISED SHAPE	11/6/12	



ADAM P/N#	DIM "A"
SATA-A-PL-VT-K-1	.083~.089 [2.10~2.25]
SATA-A-PL-VT-K-2	.130 [3.30]

SPECIFICATIONS:
 Material: Insulator: Hi-temp thermoplastic, rated UL 94V-0
 Insulator color: Black
 Contacts: Brass
 Harpoon: Brass, Tin plated
 Plating: Gold flash over Nickel underplate on mating area, Tin over Copper underplate on tails
 Electrical: Current rating: 1.5 Amps max
 Contact resistance: 30 mohms max
 Insulation resistance: 1,000 Mohms min @ 500 VAC
 Dielectric withstanding voltage: 500 VAC for 1 minute
 Mechanical: Insertion force: 45N max.
 Withdrawal force: 10N min.
 Durability: 500 cycles
 Temperature Rating: Operating temperature: -55°C to +125°C
 Environmental: Lead free, RoHS compliant



ADAM TECH

909 Railway Avenue, Union, NJ 07083
 Phone: 908-687-5000 Fax: 908-687-5710

TITLE: SERIAL ATA CONNECTOR, TYPE A
 LEFT POLARIZATION, VERTICAL, KEYPED

UNLESS OTHERWISE SPECIFIED ALL DIMENSIONS ARE INCHES [MM] TOLERANCES: EXCEPT AS NOTED INCHES		DATE	
.X ± .10	ØXX ± .10	DATE	
.XX ± .020	ØXXX ± .015		
.XXX ± .015	ØXXXX ± .010		
APPROVALS		DATE	
DRAWN	AY	2/24/11	
CHECKED	SC	2/24/11	
APPROVED			
SIZE	PART NO.	SCALE	SHEET 1 OF 1
X	SATA-A-PL-VT-K-X	NTS	A
REF:	S00078T		