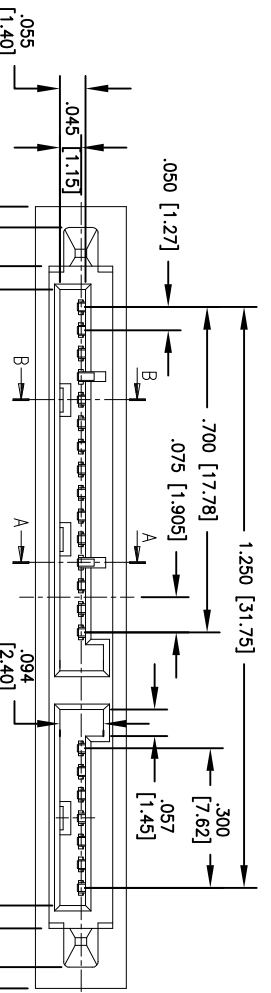


APPROVED: _____ TITLE: _____

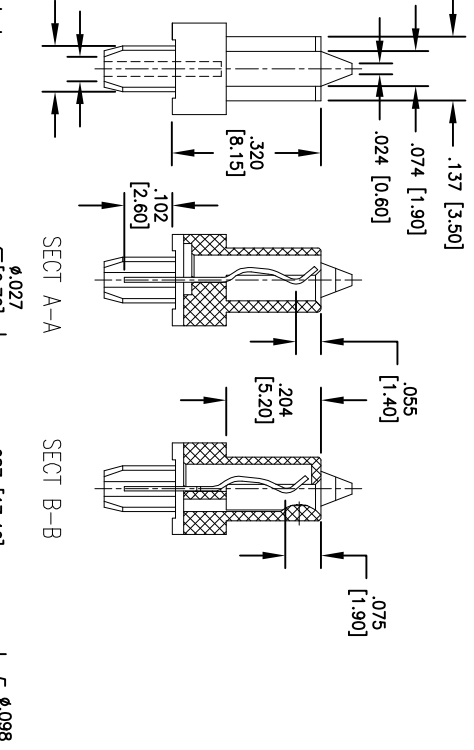
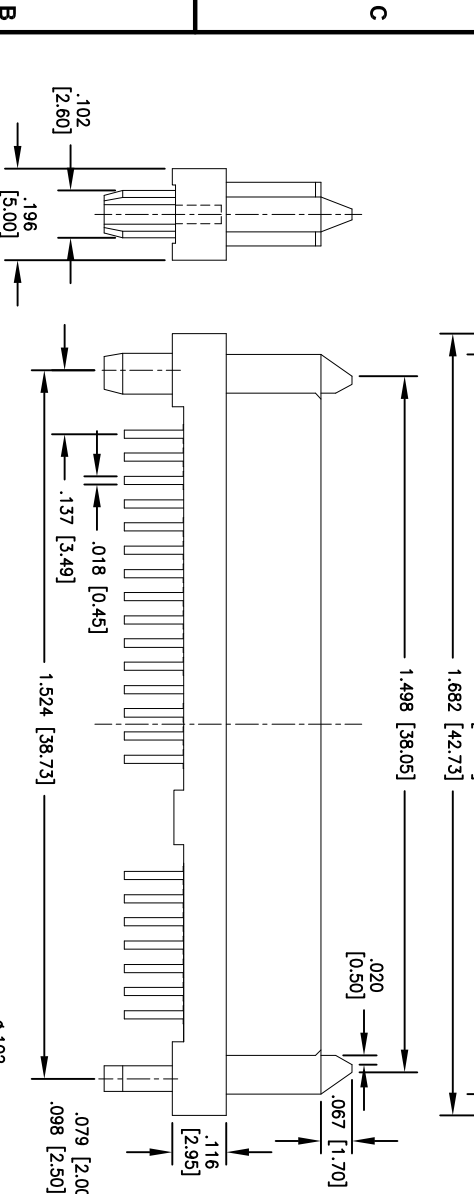
DATE: _____

Rev	AWO #	Description	Date	Appr
-		RELEASED	7/19/11	



Signal Segment	Name	Type
S1	GND	GND
S2	A+	A+
S3	A-	A-
S4	GND	GND
S5	B-	B-
S6	B+	B+
S7	GND	GND

Power Segment	Name	Type	Name	Type
P1	V33	V33	P9	V5
P2	V33	V33	P10	GND
P3	V33	V33	P11	DAS/DSS
P4	GND	GND	P12	GND
P5	GND	GND	P13	V12
P6	GND	GND	P14	V12
P7	GND	GND	P15	V12
P8	V5	V5		



SPECIFICATIONS:
Material:
 Insulator: LCP, rated UL 94V-0
 Insulator color: Black
 Contacts: Phosphor Bronze
 Plating:
 15u" Gold Flash over Nickel underplate on contact area,
 Tin over Copper underplate on solder tails

Electrical:
 Operating voltage: 100 VAC max
 Current rating: 1.5 Amps max
 Contact resistance: 30 mohms max
 Insulation resistance: 1,000 Mohms min @ 500 VDC
 Dielectric withstanding voltage: 500 VAC for 1 minute
Temperature Rating:
 Operating temperature: -55°C to +85°C

Environmental:
 Lead free, RoHS compliant
 Recommended soldering temp: 260°C for 5 sec.



ADAM TECH

909 Rahway Avenue, Union, NJ 07083
 Phone: 908-687-5000 Fax: 908-687-5710

TITLE: SATA 7+15P DIP SINGLE ROW TYPE
 FEMALE, 15u" SEL GOLD PLATED

UNLESS OTHERWISE SPECIFIED ALL DIMENSIONS ARE INCHES [MM] TOLERANCES: EXCEPT AS NOTED		INCHES		HOLES	
X	± .10	ØXX	± .10	ØXXX	± .015
XXX	± .015	ØXXX	± .010		
APPROVALS		DATE		TITLE	
DRAWN	AY	7/19/11		SIZE	PART NO.
CHECKED	SC	7/19/11		X	SATA-A4-PM-VT-15
APPROVED				REF:	S00078T
				SCALE:	NIS
				SHEET	1 OF 1