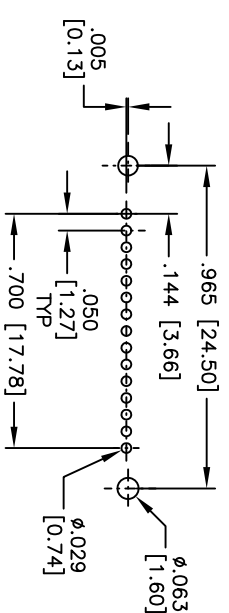
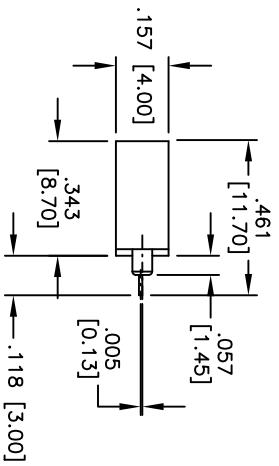
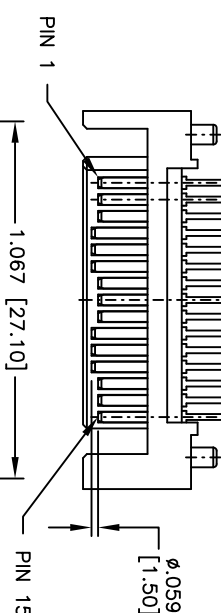
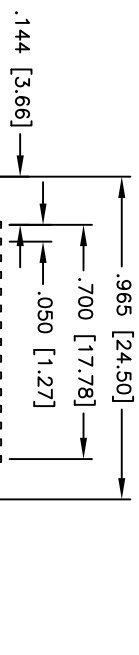
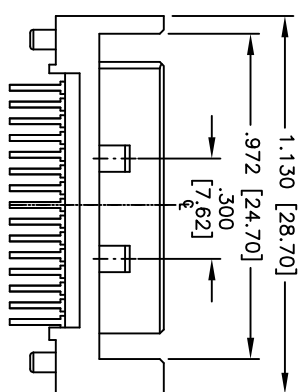


Rev	AWO #	Description	Date	Appr
-		RELEASED	5/26/10	

APPROVED: _____
 DATE: _____ TITLE: _____



RECOMMENDED PCB LAYOUT



SPECIFICATIONS:
 Material: Insulator: LCP, rated UL 94V-0
 Insulator color: Black
 Contacts: Brass
 Plating: Gold Flash over Nickel underplate on contact area, Tin over Copper underplate on solder tails

Electrical:
 Current rating: 1.5 Amps per contact
 Contact resistance: 30 mohms max
 Insulation resistance: 1000 Mohms min
 Dielectric withstanding voltage: 500 VAC

Temperature Rating:
 Operating temperature: -55°C to +125°C
 Environmental: Lead free, RoHS compliant



Recommended soldering temp: 260°C for 5 seconds

ADAM TECH

909 Railway Avenue, Union, NJ 07083
 Phone: 908-687-5000 Fax: 908-687-5710

TITLE
 SATA CONNECTOR, 15PIN, MALE,
 VERTICLE THRU-HOLE, DIP TYPE

UNLESS OTHERWISE SPECIFIED ALL DIMENSIONS ARE INCHES [MM]		TOLERANCES: EXCEPT AS NOTED		Holes		DATE	
.X	± .10	Ø.X	± .10	Ø.X	± .10		
.XX	± .020	Ø.XX	± .015	Ø.XX	± .010		
.XXX	± .015	Ø.XXX	± .010	Ø.XXX	± .010		
APPROVALS		DATE		DATE		DATE	
DRAWN	DY	5/26/10					
CHECKED							
APPROVED							
SIZE	PART NO.	TITLE		REV.			
X	SATA-A6-NP-VT	SATA CONNECTOR, 15PIN, MALE, VERTICLE THRU-HOLE, DIP TYPE		-			
REF:	S00154T	SCALE:	NIS	SHEET	1 OF 1		