

6

5

4

3

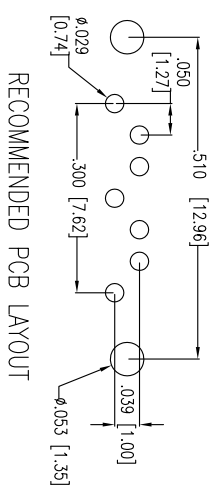
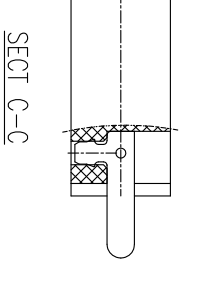
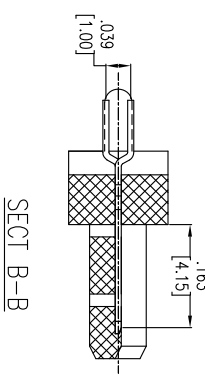
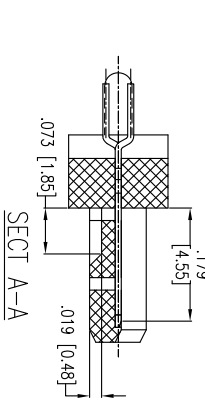
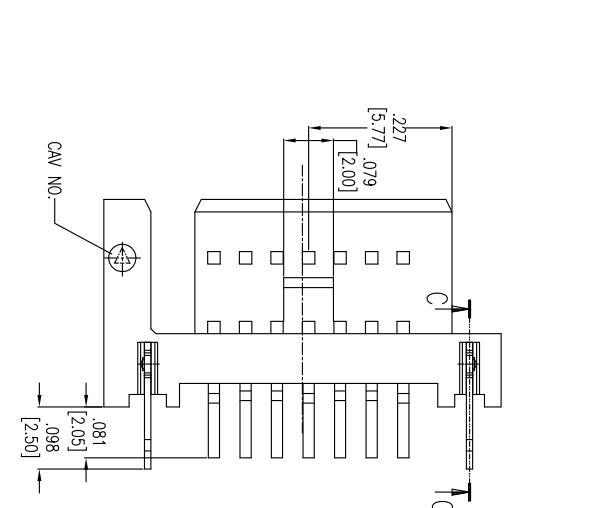
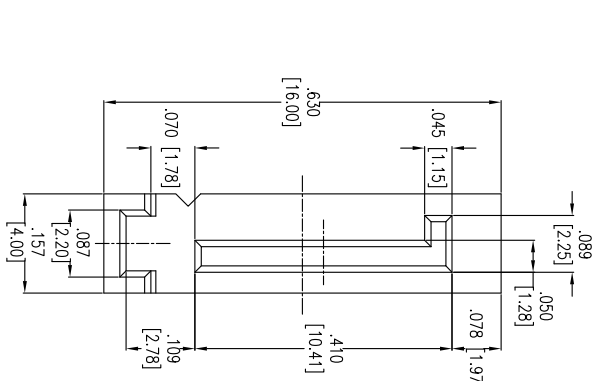
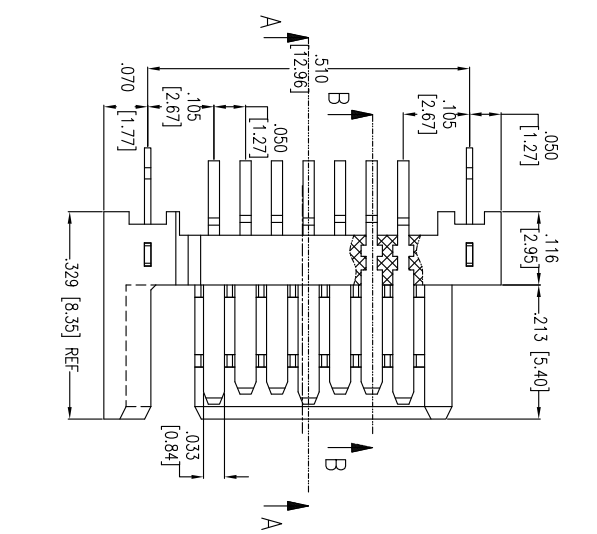
2

1

Rev	AWO #	Description	Date	Appr
-		RELEASED	3/16/09	

APPROVED: _____

DATE: _____ TITLE: _____



RECOMMENDED PCB LAYOUT

SPECIFICATIONS:

Material: Insulator: Hi-temp thermoplastic, rated UL 94V-0

Insulator color: Black

Contacts: Brass

Plating:

15u" Gold over Nickel underplate on contact area, Tin over Copper underplate on solder tails

Electrical:

Operating voltage: 100 VAC max

Current rating: 1.5 Amps max

Contact resistance: 30 mohms max

Insulation resistance: 1000 Mohms min @ 500 VDC

Dielectric withstanding voltage: 500 VAC for 1 minute

Temperature Rating:

Operating temperature: -55°C to +125°C

Environmental: Lead free, RoHS compliant



UNLESS OTHERWISE SPECIFIED
ALL DIMENSIONS ARE INCHES [MM]
TOLERANCES: EXCEPT AS NOTED
INCHES: .10
.XX ± .020
.XXX ± .015
HOLES: Ø.X ± .10
Ø.XXX ± .015
APPROVALS: _____ DATE: _____

ADAM TECH
909 Ratway Avenue, Union, NJ 07083
Phone: 908-687-5000 Fax: 908-687-5710

TITLE: SATA CONNECTOR, 7PIN, STRAIGHT, DIP TYPE
15u" SELECTIVE GOLD PLATED

DRAWN	DY	DATE	SIZE	PART NO.	REV.
CHECKED		3/16/09	X	SATA-C-PR-VT-BL-15	-
APPROVED			REF: S00078T	SCALE: NTS	SHEET 1 OF 1

6

5

4

3

2

1