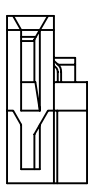
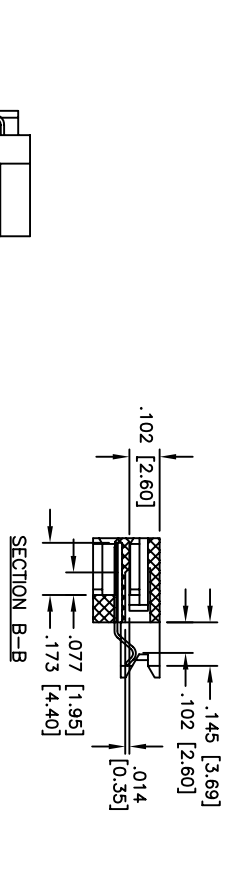
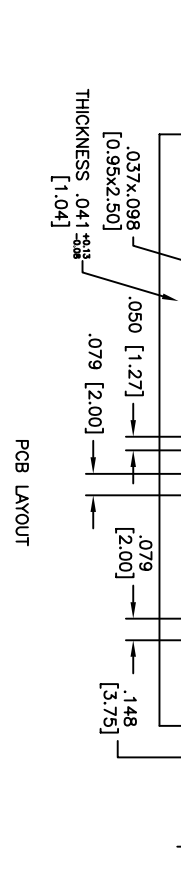
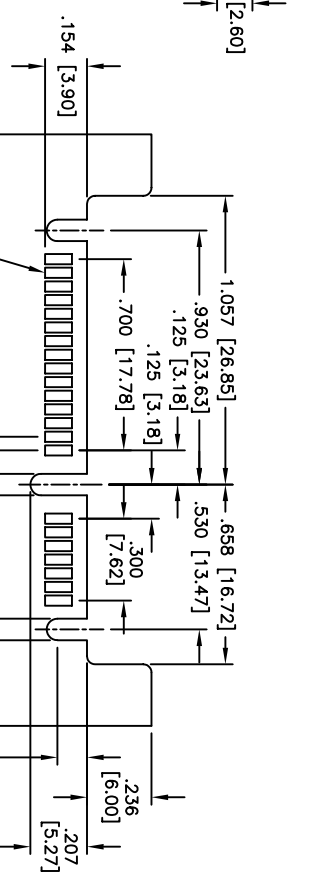
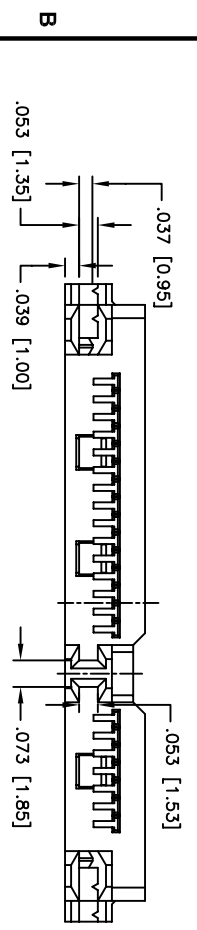
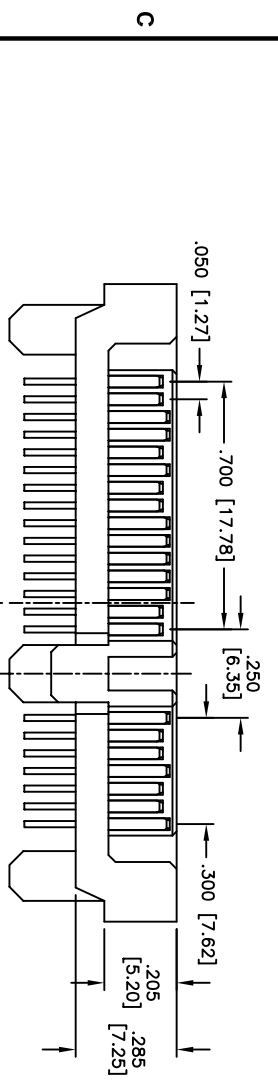
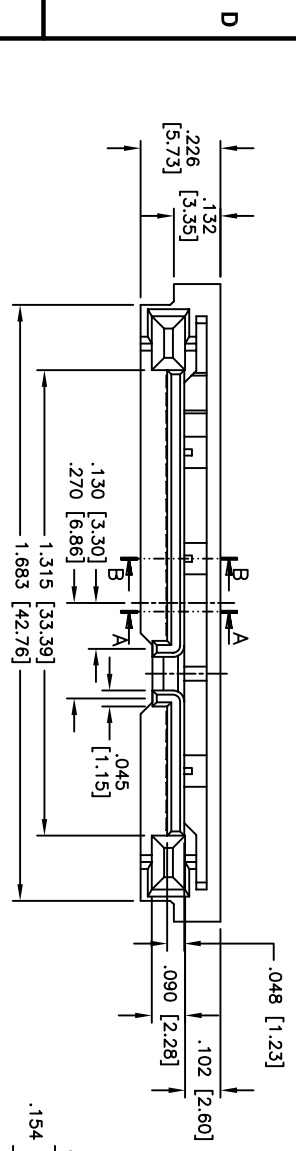


| Rev | AWO # | Description | Date    | Appr |
|-----|-------|-------------|---------|------|
| -   |       | RELEASED    | 5/12/05 |      |

APPROVED: \_\_\_\_\_  
 DATE: \_\_\_\_\_ TITLE: \_\_\_\_\_



**SPECIFICATIONS:**

**Material:**  
 Insulator: LCP, rated UL 94V-0  
 Insulator color: Black  
**Contacts:** Brass  
**Plating:**  
 Gold Flash over Nickel underplate on contact area, Tin over Copper

**Electrical:**  
 Operating voltage: 30 VAC max  
 Current rating: 1.5 Amps max  
 Contact resistance: 30 mohms max  
 Insulation resistance: 1,000 Mohms min @ 500 VDC  
 Dielectric withstanding voltage: 500 VAC for 1 minute

**Mechanical:**  
 Insertion force: 45N max.  
 Withdrawal force: 10N min.  
 Durability: 500 cycles  
 Temperature Rating:  
 Operating temperature: -25°C to +125°C  
 Environmental:  
 Lead free, RoHS compliant

|  |              |
|--|--------------|
| UNLESS OTHERWISE SPECIFIED<br>ALL DIMENSIONS ARE INCHES [MM] |              |
| TOLERANCES: EXCEPT AS NOTED                                  |              |
| INCHES   | HOLES        |
| .X ± .10   | Ø.X ± .10    |
| .XX ± .020   | Ø.XXX ± .015 |
| .XXX ± .015  | Ø.XXX ± .010 |
| APPROVALS  |              |
| DRAWN  | SS           |
| CHECKED  |              |
| APPROVED   |              |
|  | DATE         |
|  | 5/12/05      |

**ADAM TECH**  
 909 Rahway Avenue, Union, NJ 07083  
 Phone: 908-687-5000 Fax: 908-687-5710

|       |   |
|-------|---|
| TITLE | SATA CONNECTOR, 7P + 15P, STRADDLE MOUNT MALE |
| SIZE  | PART NO.                                      |
| X     | SATA-G-PM-SM-PDG                              |
| REF:  | SCALE: NTS                                    |
|       | SHEET 1 OF 1                                  |