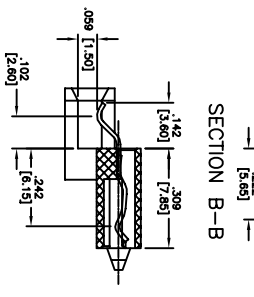
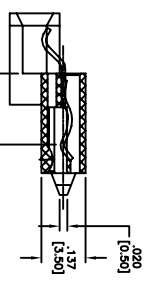
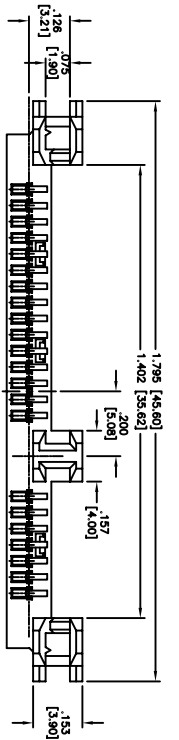
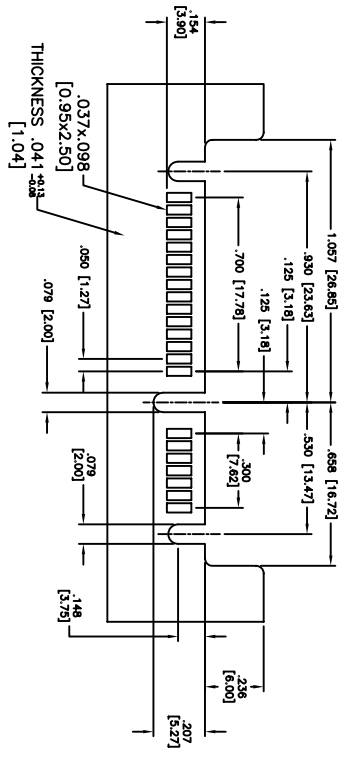
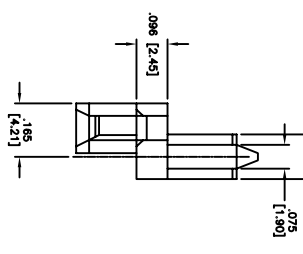
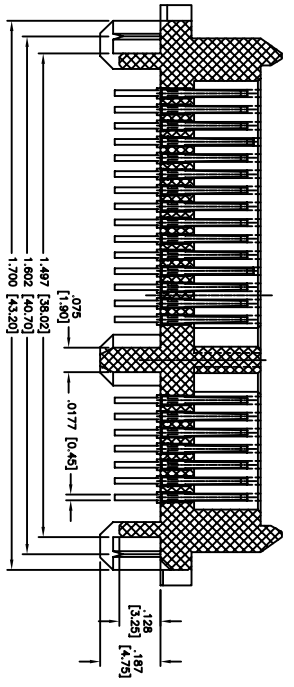
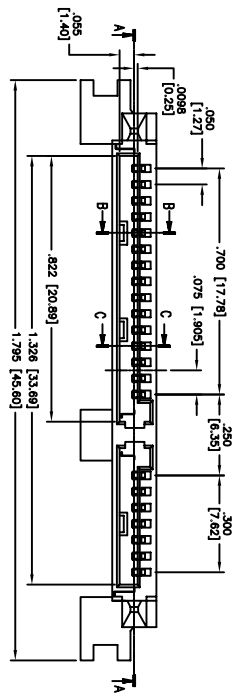


APPROVED: _____
 DATE: _____ TITLE: _____



SPECIFICATIONS:

Material: Insulator: LCP, rated UL 94V-0
 Insulator color: Black
 Contacts: Brass
 Plating: Gold
 Gold Flash over Nickel underplate on contact area, Tin over Copper underplate on solder tails

Electrical:
 Operating voltage: 30 VAC max
 Current rating: 1.5 Amps max
 Contact resistance: 30 mohms max
 Insulation resistance: 1,000 Mohms min @ 500 VDC
 Dielectric withstanding voltage: 500 VAC for 1 minute

Mechanical:
 Insertion force: 45N max.
 Withdrawal force: 10N min.
 Durability: 500 cycles
 Temperature Rating: Operating temperature: -25°C to +125°C
 Environmental: Lead free, RoHS compliant

Rev	AWO #	Description	Date	Appr
-		RELEASED	5/12/05	
A		REDRAWN	6/13/08	

UNLESS OTHERWISE SPECIFIED ALL DIMENSIONS ARE INCHES [MM]	
TOLERANCES: EXCEPT AS NOTED	
INCHES	HOLES
.X ± .10	Ø.X ± .10
.XX ± .020	Ø.XXX ± .015
.XXX ± .015	Ø.XXXX ± .010
APPROVALS	DATE
DRAWN	SS
CHECKED	
APPROVED	5/12/05

ADAM TECH
 909 Railway Avenue, Union, NJ 07083
 Phone: 908-687-5000 Fax: 908-687-5710

TITLE: SATA CONNECTOR, 7P + 15P, STRADDLE MOUNT FEMALE

SIZE	PART NO.	REV.
X	SATA-G-PM-SM	A
REF:	SCALE: NTS	SHEET 1 OF 1

