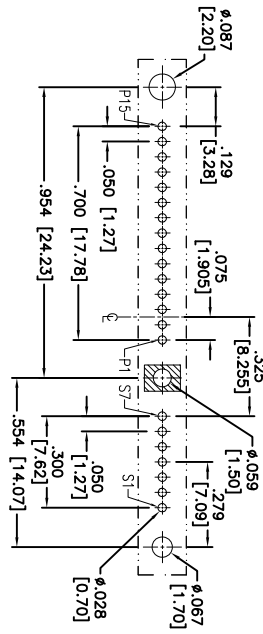
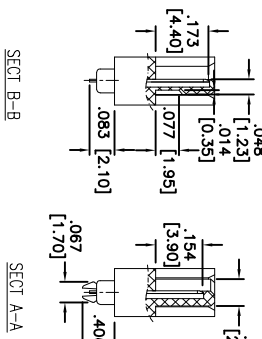
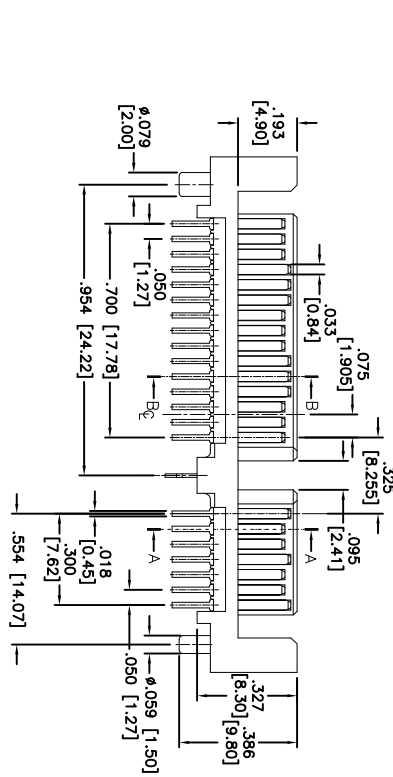
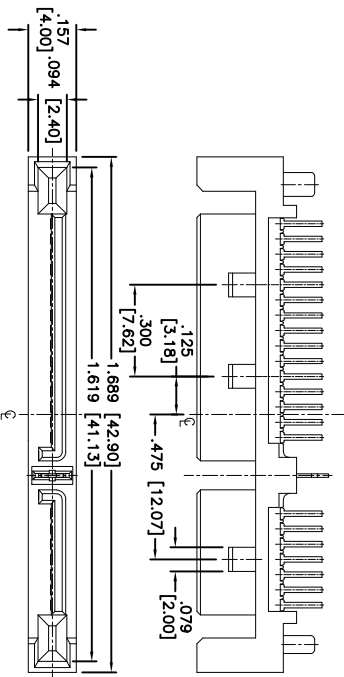


Rev	AWO #	Description	Date	Appr
-		RELEASED	5/14/12	

APPROVED: \_\_\_\_\_

DATE: \_\_\_\_\_ TITLE: \_\_\_\_\_

Signal Segment		Power Segment	
Name	Type	Name	Type
S1	GND	P1	V33
S2	A+	P2	V33
S3	A-	P3	V33
S4	GND	P4	GND
S5	B-	P5	GND
S6	B+	P6	GND
S7	GND	P7	V5
		P8	V5



RECOMMENDED PCB LAYOUT

**SPECIFICATIONS:**

Material: Insulator: Hi-temp thermoplastic, rated UL 94V-0

Insulator color: Black

Contacts: Brass

Plating: 15u"Gold over Nickel underplate on contact area, Tin over Copper underplate on solder tails

Electrical: Current rating: 1.5 Amps max. Contact resistance: 30 Milliohms max. Dielectric withstanding voltage: 1,000 Megohms min. Temperature Rating: Operating temperature: -55°C to +85°C

Environmental: Lead free, RoHS compliant

**ENVIRONMENTAL:**

Operating temperature: -55°C to +85°C



UNLESS OTHERWISE SPECIFIED	
ALL DIMENSIONS ARE INCHES [MM]	
TOLERANCES: EXCEPT AS NOTED	
INCHES	HOLES
.X ± .10	Ø.X ± .10
.XX ± .020	Ø.XXX ± .015
.XXX ± .015	Ø.XXXX ± .010
APPROVALS	DATE
DRAWN AY	5/14/12
CHECKED NP	5/14/12
APPROVED	

**ADAM TECH**

909 Railway Avenue, Union, NJ 07083

Phone: 908-687-5000 Fax: 908-687-5710

TITLE: SATA CONNECTOR, 7P + 15P, VERTICAL THRU HOLE, TYPE G, 15u" SEL GOLD PLATED

SIZE: PART NO. SATAG-PM-VT-15

REV.:

REF: S00078T	SCALE: NTS	SHEET 1 OF 1
--------------	------------	--------------