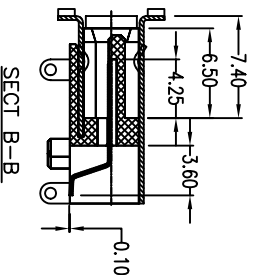
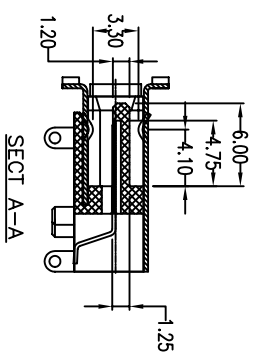
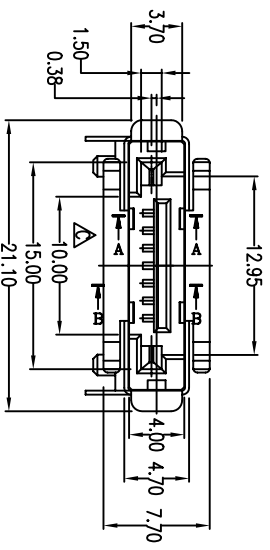
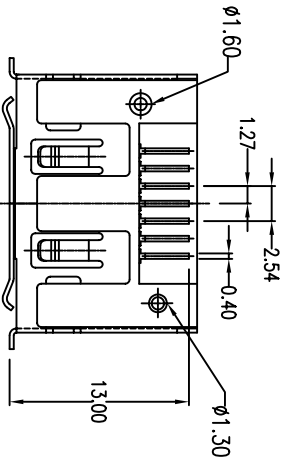
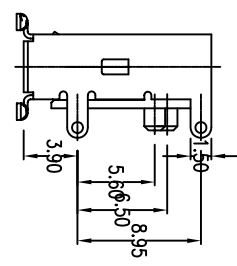
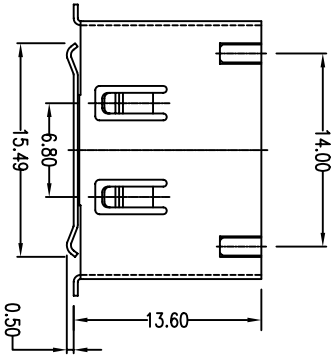
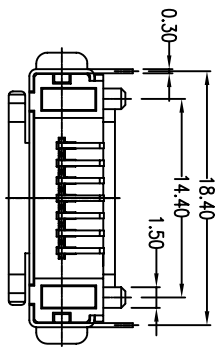
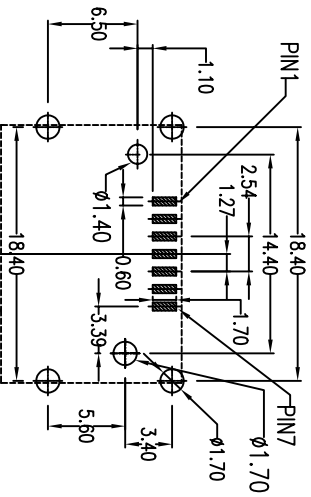


Rev	AWO #	Description	Date	Appr
-		RELEASED	12/28/04	

APPROVED: _____
 DATE: _____ TITLE: _____



SPECIFICATIONS:
 Material: Insulator: LCP, glass reinforced, rated UL 94V-0
 Insulator color: Black
 Contacts: Brass
 Plating: Contacts: Gold Flash over Nickel underplate, Tin over Copper underplate on tails
 Electrical:
 Operating voltage: 100 VAC max
 Current rating: 1.5 Amps max
 Contact resistance: 30 mohms max
 Insulation resistance: 1000 Mohms min @ 500 VDC
 Dielectric withstanding voltage: 500 VAC for 1 minute
 Mechanical:
 Insertion force: 2550g max.
 Withdrawal force: 710g min.
 Durability: 2500 cycles
 Temperature Rating: Operating temperature: -55°C to +125°C



ADAM TECH

909 Rahway Avenue, Union, NJ 07083
 Phone: 908-687-5000 Fax: 908-687-5710

TITLE: SATIA CONNECTOR, 7 PIN, RIGHT ANGLE
 REVERSE, SHIELDED, SURFACE MOUNT

UNLESS OTHERWISE SPECIFIED ALL DIMENSIONS ARE IN INCHES [MM]	
TOLERANCES: EXCEPT AS NOTED	
INCHES	HOLDS
.X ± .10	ØXX ± .10
.XX ± .020	ØXXX ± .015
.XXX ± .015	ØXXXX ± .010
APPROVALS	DATE
SS	12/28/04
DRAWN	
CHECKED	
APPROVED	

SIZE	PART NO.	REV.
X	SATIA-H-PM-SMT-FS-PG-R	
REF:	SCALE: NTS	SHEET 1 OF 1