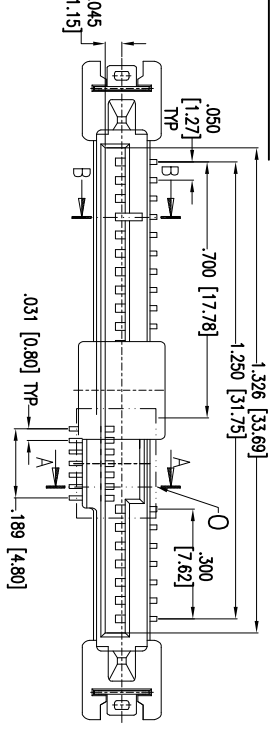
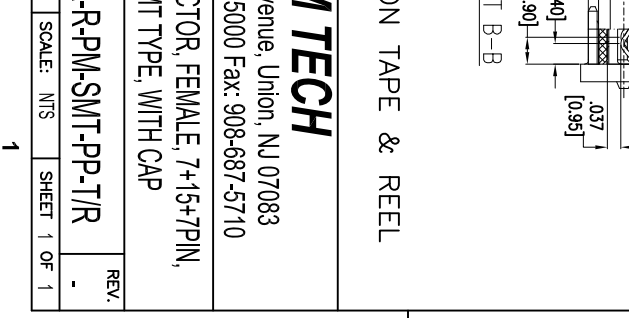
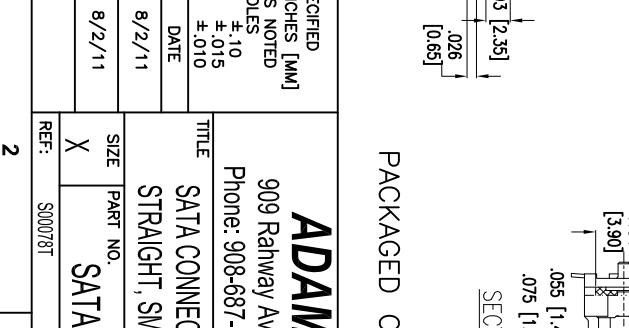
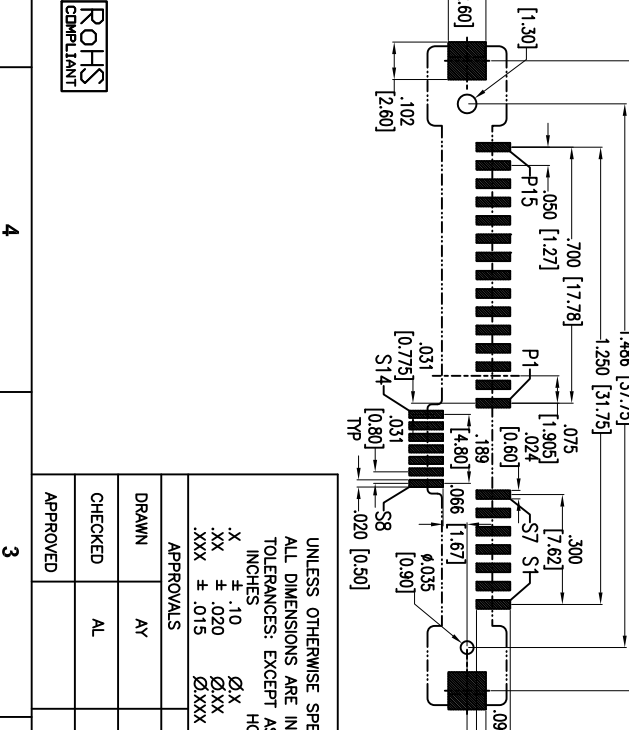
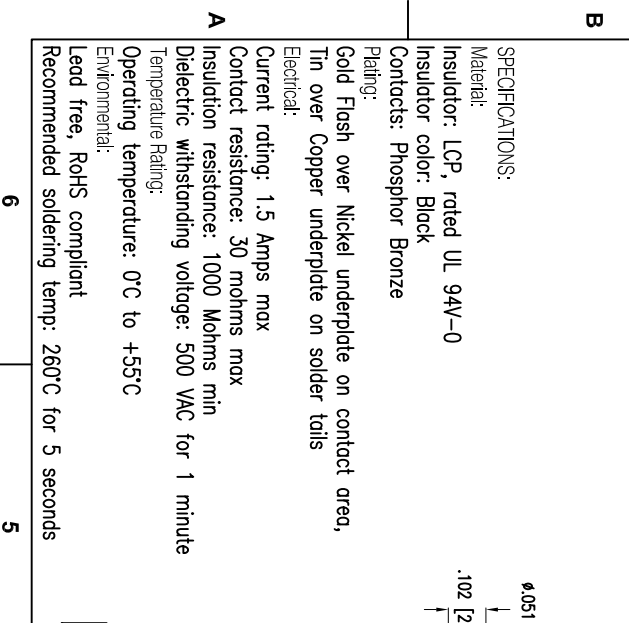
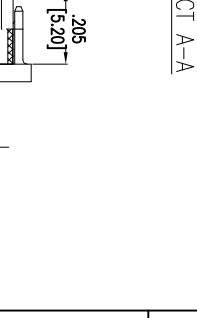
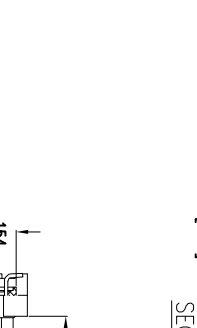
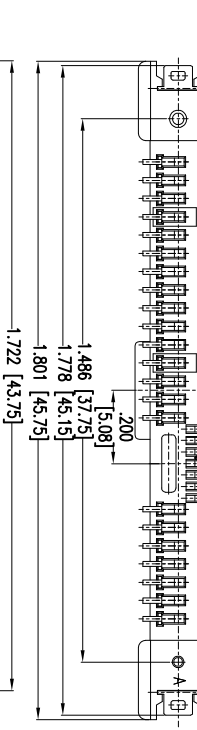
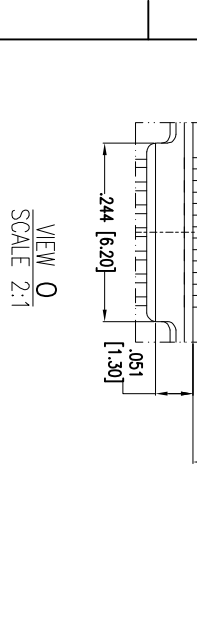
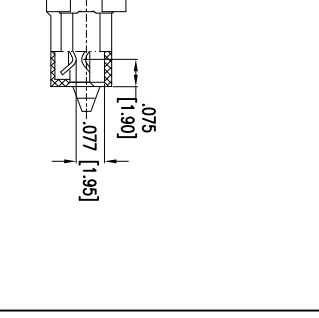
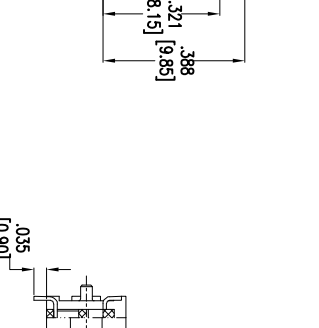
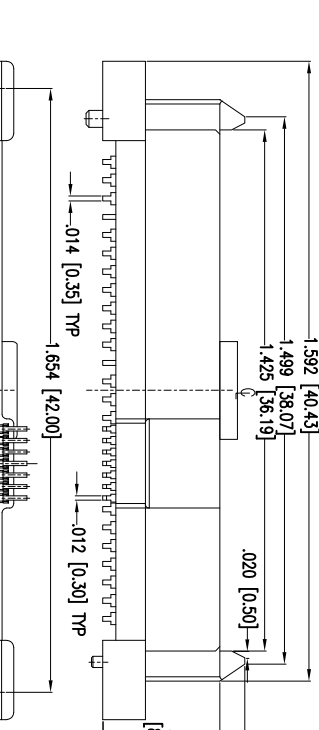
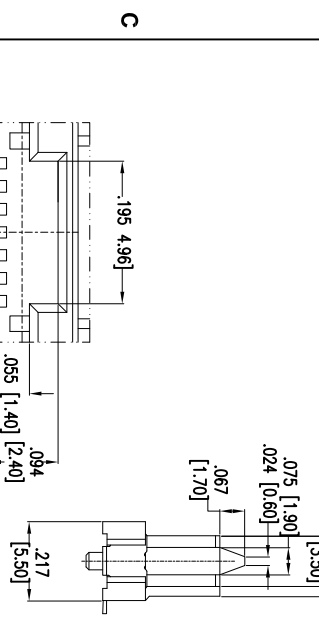


6	5	4	3	2	1		
APPROVED: _____	TITLE: _____	DATE: _____	Rev	AWO #	Description	Date	Appr
			-		RELEASED	8/2/11	



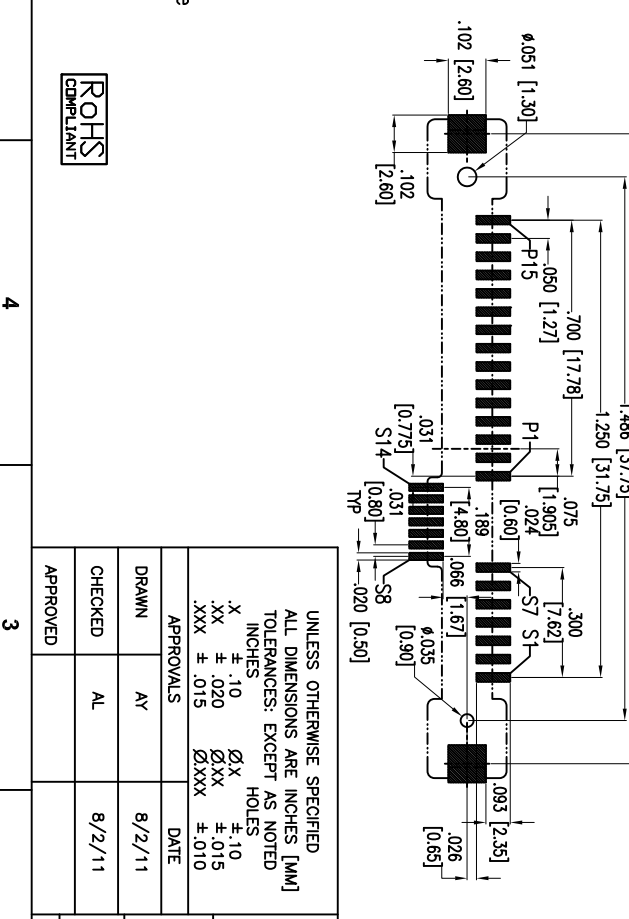
Pin, NO.	Type	Name	Type
P1	V33	P9	V5
P2	V33	P10	Ground
P3	V33	P11	Bezels Led
P4	Ground	P12	Ground
P5	Ground	P13	V12
P6	Ground	P14	V12
P7	V2	P15	V12
P8	V3		

Pin, NO.	Type	Name	Type
S1	Signal Ground	S8	Signal Ground
S2	TP+	S9	IS+
S3	TP-	S10	IS-
S4	Signal Ground	S11	Signal Ground
S5	RP+	S12	RS-
S6	RP-	S13	RS+
S7	Signal Ground	S14	Signal Ground



VIEW O
SCALE 2:1

SPECIFICATIONS:
 Material: Insulator: LCP, rated UL 94V-0
 Insulator color: Black
 Contacts: Phosphor Bronze
 Plating: Gold Flash over Nickel underplate on contact area, Tin over Copper underplate on solder tails
 Electrical: Current rating: 1.5 Amps max
 Contact resistance: 30 mohms max
 Insulation resistance: 1000 Mohms min
 Dielectric withstanding voltage: 500 VAC for 1 minute
 Temperature Rating: Operating temperature: 0°C to +55°C
 Environmental: Lead free, RoHS compliant
 Recommended soldering temp: 260°C for 5 seconds



UNLESS OTHERWISE SPECIFIED
 ALL DIMENSIONS ARE IN INCHES [MM]
 TOLERANCES: EXCEPT AS NOTED
 INCHES: .X ± .10
 .XX ± .020
 .XXX ± .015
 .XXXX ± .010
 HOLES: Ø.X ± .10
 Ø.XXX ± .015
 Ø.XXXX ± .010

APPROVALS

APPROVALS	DATE
DRAWN AY	8/2/11
CHECKED AL	8/2/11
APPROVED	

TITLE: SATA CONNECTOR, FEMALE, 7+15+7PIN, STRAIGHT, SMT TYPE, WITH CAP

909 Rahway Avenue, Union, NJ 07083
 Phone: 908-687-5000 Fax: 908-687-5710

SIZE PART NO. SATAR-PM-SMT-PP-T/R

REF: S00078T SCALE: NTS SHEET 1 OF 1

ADAM TECH
 PACKAGED ON TAPE & REEL

