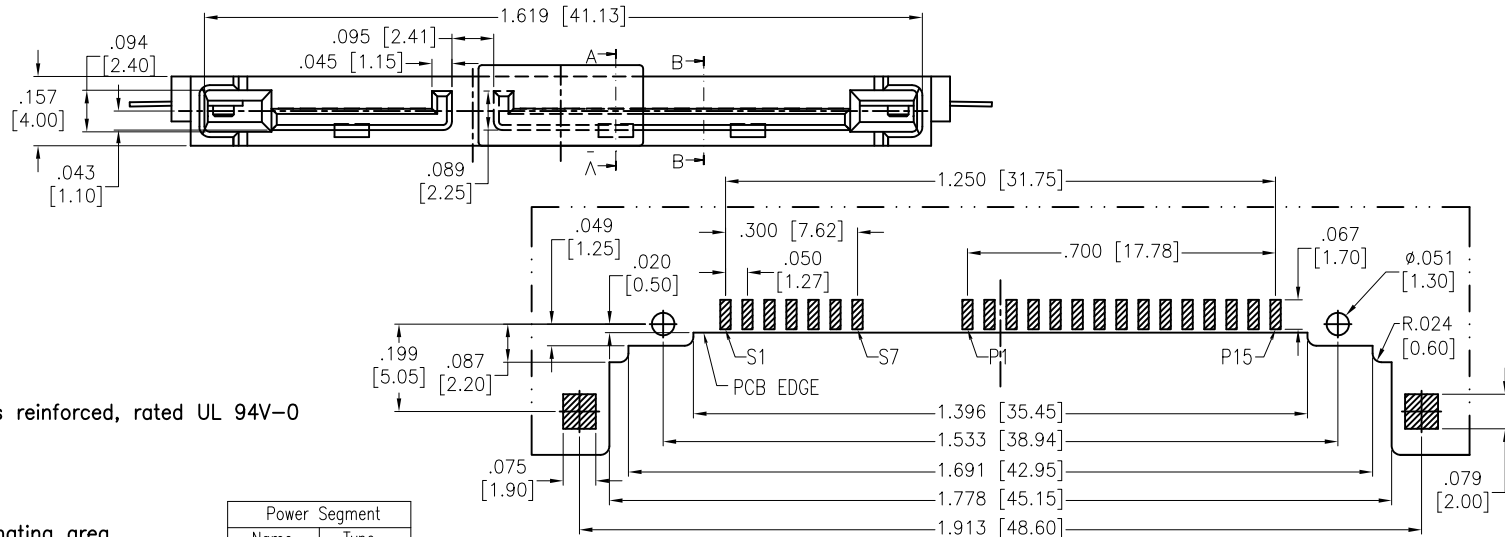
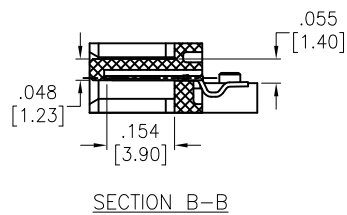
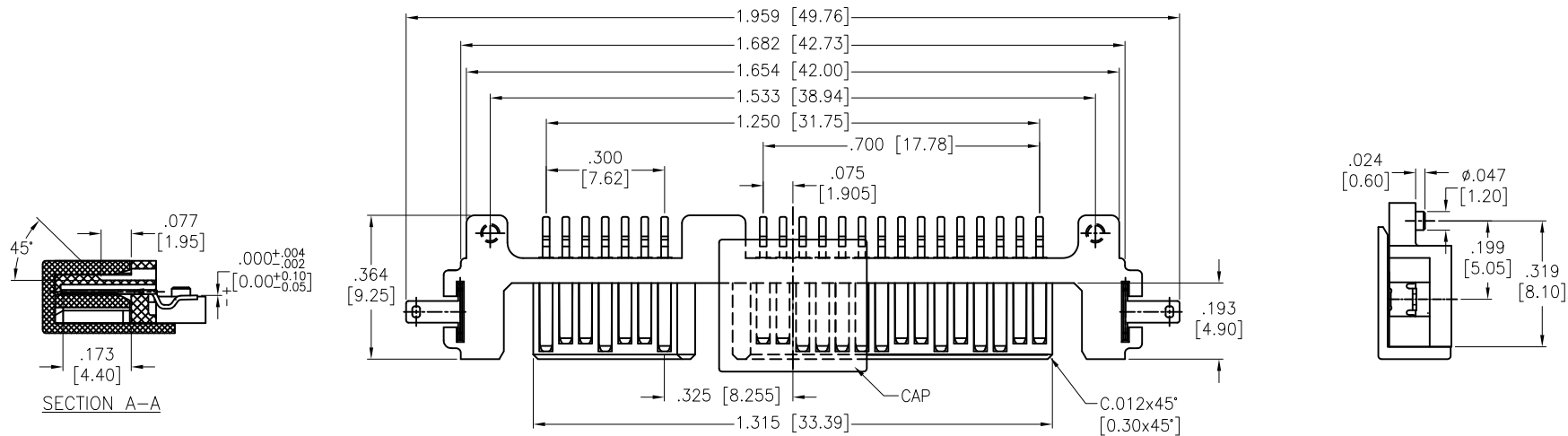


APPROVED: _____
 DATE: _____ TITLE: _____

Rev	AWO #	Description	Date	Appr
-		RELEASED	9/30/14	



SPECIFICATIONS:
 Material:
 Insulator: Hi-Temp Thermoplastic, Glass reinforced, rated UL 94V-0
 Insulator color: Black
 Contacts: Brass
 Harpoon: Brass, Tin plated
 Plating:

Gold flash over Nickel underplate on mating area,
 Tin over Copper underplate on tails
 Electrical:
 Current rating: 1.5 Amps max
 Contact resistance: 30 mohms max
 Insulation resistance: 1,000 Mohms min
 Dielectric withstanding voltage: 500 VAC for 1 minute

Mechanical:
 Insertion force: 45N max.
 Withdrawal force: 10N min.
 Durability: 500 cycles
 Temperature Rating:
 Operating temperature: -55°C to +85°C
 Environmental:
 Lead free, RoHS compliant

Power Segment	
Name	Type
P1	V3.3
P2	V3.3
P3	V3.3
P4	GND
P5	GND
P6	GND
P7	V5
P8	V5
P9	V5
P10	GND
P11	DAS/DSS
P12	GND
P13	V12
P14	V12
P15	V12

Signal Segment	
Name	Type
S1	GND
S2	A+
S3	A-
S4	GND
S5	B-
S6	B+
S7	GND

PACKAGED ON TAPE & REEL RECOMMENDED PCB LAYOUT

UNLESS OTHERWISE SPECIFIED ALL DIMENSIONS ARE INCHES [MM] TOLERANCES: EXCEPT AS NOTED		
INCHES		HOLES
.X ± .10	Ø.X ± .10	
.XX ± .020	Ø.XX ± .015	
.XXX ± .015	Ø.XXX ± .010	
APPROVALS		DATE
DRAWN	HR	9/30/14
CHECKED	NP	9/30/14
APPROVED		

ADAM TECH
 909 Rahway Avenue, Union, NJ 07083
 Phone: 908-687-5000 Fax: 908-687-5710

TITLE: **SATA CONNECTOR, 7P + 15P, RIGHT ANGLE, REVERSE SURFACE MOUNT MALE**

SIZE	PART NO.	REV.
X	SATA-S1-PM-SMT-R-PP-HF-T/R	-
REF: S00078T	SCALE: NTS	SHEET 1 OF 1

