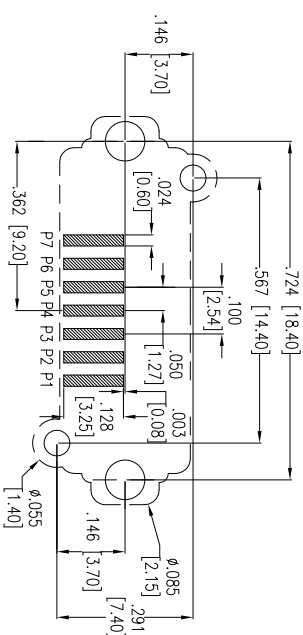
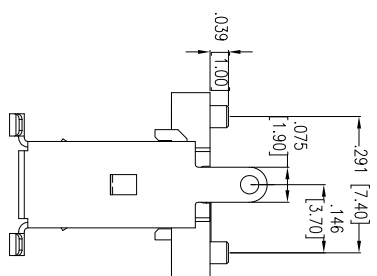
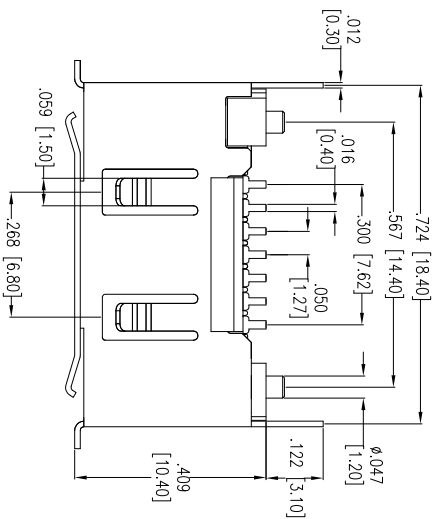


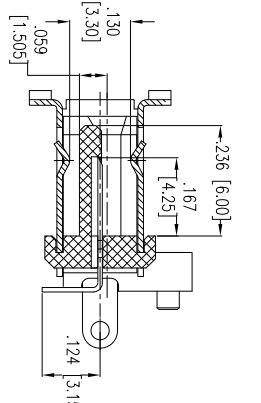
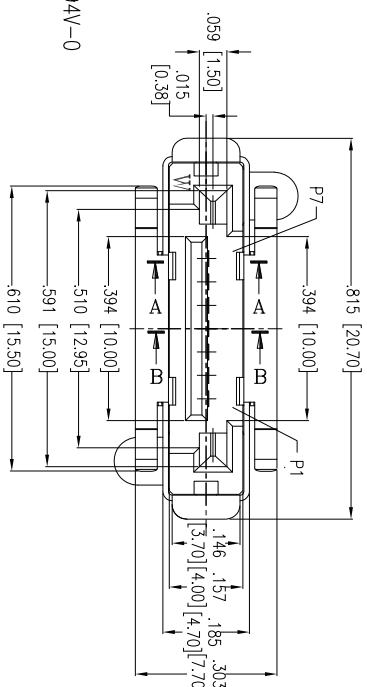
Rev	AWO #	Description	Date	Appr
-		RELEASED	9/01/09	

APPROVED: \_\_\_\_\_

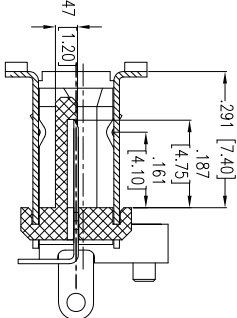
DATE: \_\_\_\_\_ TITLE: \_\_\_\_\_



RECOMMENDED PCB LAYOUT



SECT A-A



SECT B-B

**SPECIFICATIONS:**

- Material: Insulator: LCP, rated UL 94V-0
- Insulator color: Black
- Contacts: Brass
- Plating: Gold Flash over Nickel underplate on contact area, Tin over Copper underplate on solder tails

- Electrical: Operating voltage: 100 VAC max
- Current rating: 1.5 Amps max
- Contact resistance: 30 mohms max
- Insulation resistance: 1000 Mohms min @ 500 VDC
- Dielectric withstanding voltage: 500 VAC for 1 minute
- Temperature Rating: Operating temperature: -55° C to +125° C
- Environmental: Lead free, RoHS compliant
- Recommended soldering temp: 260° C for 5 seconds



UNLESS OTHERWISE SPECIFIED  
ALL DIMENSIONS ARE INCHES [MM]  
TOLERANCES: EXCEPT AS NOTED  
INCHES Holes  
.X ± .10  
.XX ± .020  
.XXX ± .015  
Holes  
Ø.X ± .10  
Ø.XXX ± .015  
DATE

APPROVALS	DATE
DRAWN DY	9/01/09
CHECKED	
APPROVED	

**ADAM TECH**  
909 Rahway Avenue, Union, NJ 07083  
Phone: 908-687-5000 Fax: 908-687-5710

TITLE: SATA CONNECTOR, 7PIN, STRAIGHT, SMT TYPE

SIZE	PART NO.	REV.
X	SATA-W-NP-VT-SMT	-