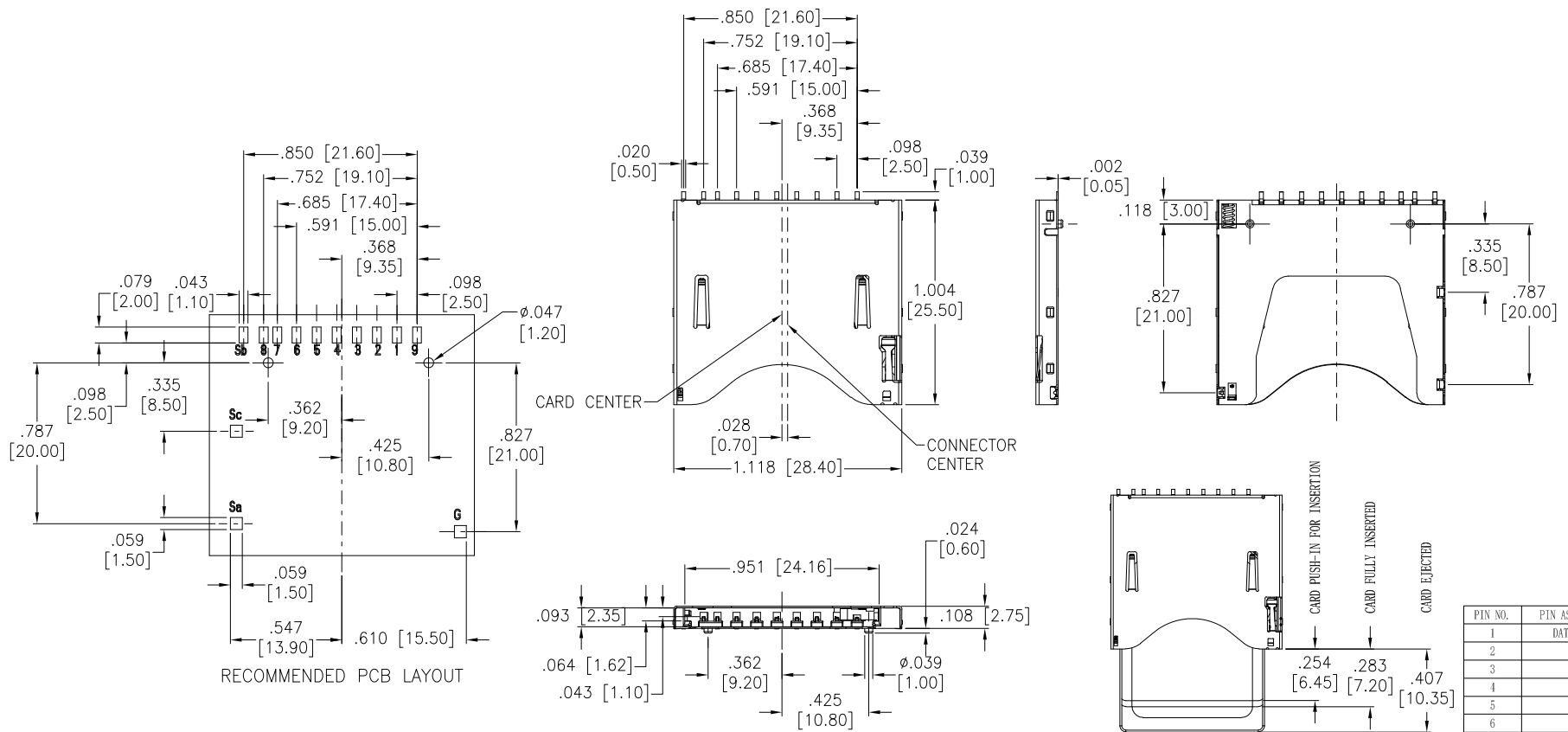


APPROVED: _____
 DATE: _____ TITLE: _____

Rev	AWO #	Description	Date	Appr
-		RELEASED	3/8/16	



PIN NO.	PIN ASSIGNMENT
1	DAT3/CS/CD
2	CMD
3	VSS1
4	VDD
5	CLK
6	VSS2
7	DAT0
8	DAT1
9	DAT2
Sa	WRITE PROTECTION
Sb	CARD DETECTION
Sc	COMMON SWITCH
G	GROUND

SPECIFICATIONS:

Material:
 Insulator: Hi-temp thermoplastic, rated UL 94V-0
 Insulator color: Black
 Contacts: Phosphor Bronze
 Switch Pin: Phosphor Bronze
 Shell: Stainless
 Spring: Piano Wire
 Crank-Axle: Stainless
 Plating:
 Gold flash over Nickel underplate overall
 Electrical:
 Rating Current: 0.5A (Max.)/(1PIN)
 Rating Voltage: 100V AC/DC
 Contact Resistance: 50 mΩ Max
 Insulation Resistance: 1000MΩ Min
 Dielectric Withstanding Voltage: 500V AC for 1 minute
 Temperature Rating:
 Operating temperature: -40°C to +90°C
 Environmental:
 Lead free, RoHS compliant.



PACKAGED ON TAPE & REEL

Card detection switch		Write protection switch		
When card is ejected	When card is inserted	When card is ejected	When card is inserted	
			Write protect	Write enable
OPEN	CLOSE	OPEN	OPEN	CLOSE
Sb Sc	Sb Sc	Sa Sc	Sa Sc	Sa Sc

NOTES:
 ALL MATERIALS AND PLATING SPECIFICATION COMPLY WITH THE GREEN PRODUCT POLICY

UNLESS OTHERWISE SPECIFIED ALL DIMENSIONS ARE INCHES [MM] TOLERANCES: EXCEPT AS NOTED		
INCHES HOLES		
.X ± .10	Ø.X ± .10	
.XX ± .020	Ø.XX ± .015	
.XXX ± .015	Ø.XXX ± .010	
APPROVALS		DATE
DRAWN	AY	3/8/16
CHECKED	LW	3/8/16
APPROVED		

ADAM TECH
 909 Rahway Avenue, Union, NJ 07083
 Phone: 908-687-5000 Fax: 908-687-5710

TITLE: **SECURE DIGITAL SOCKET, PUSH-PUSH TYPE, W/SWITCH, H=2.75 MM**

SIZE X	PART NO. SDP-09N-G-T/R	REV. -
REF: S00275T	SCALE: NTS	SHEET 1 OF 1